

# CM 420

**Gru a torre**

**Tower crane**

**Grue a tour**

**Thkranurmdre**

Scheda tecnica

Technical data sheet

Spécifiques techniques

Technische Spezifikationen

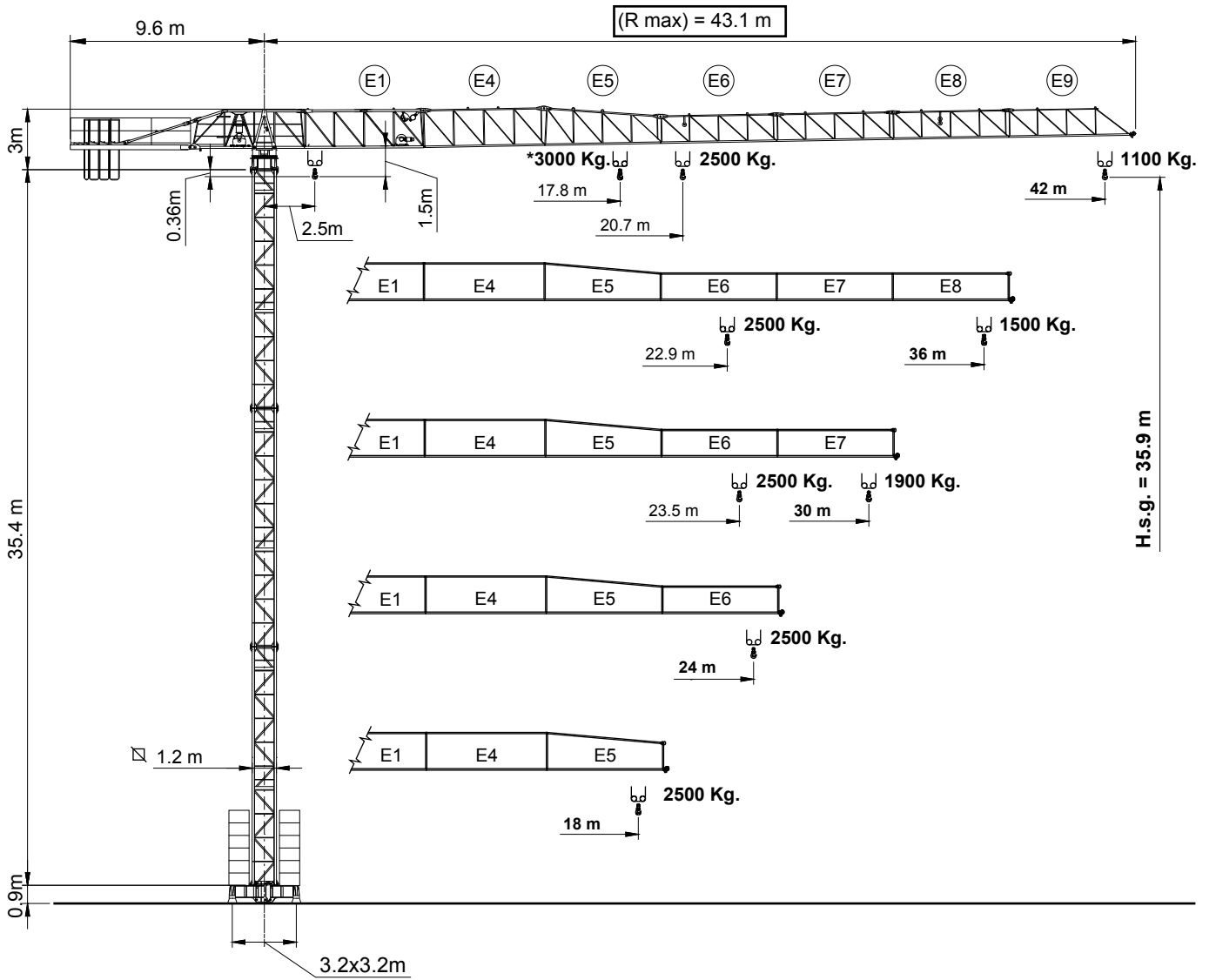


**CATTANEO**

AZIENDA CON SISTEMA DI  
GESTIONE PER LA QUALITÀ  
CERTIFICATO DA DNV  
=UNI EN ISO 9001:2000=

# CM 420 Gru a torre - Tower crane - Grue a tour - Thkranurmdre

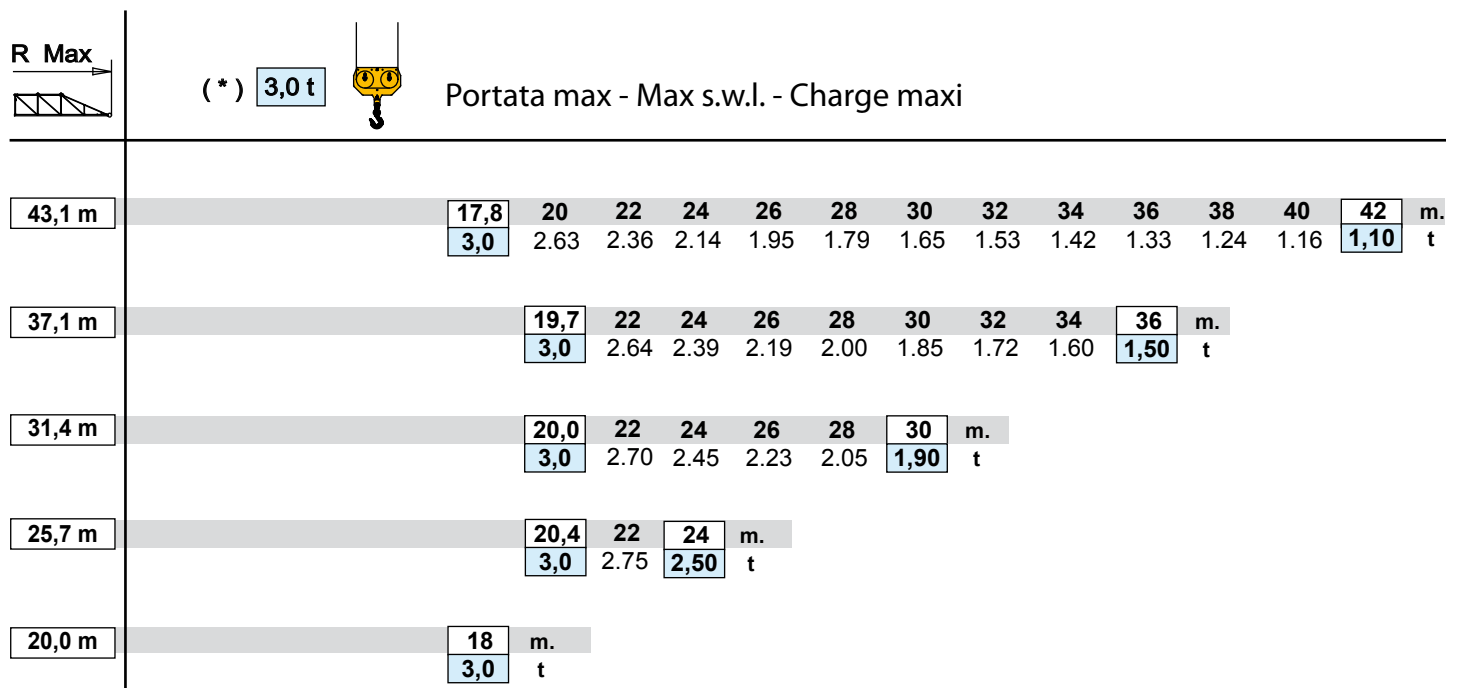
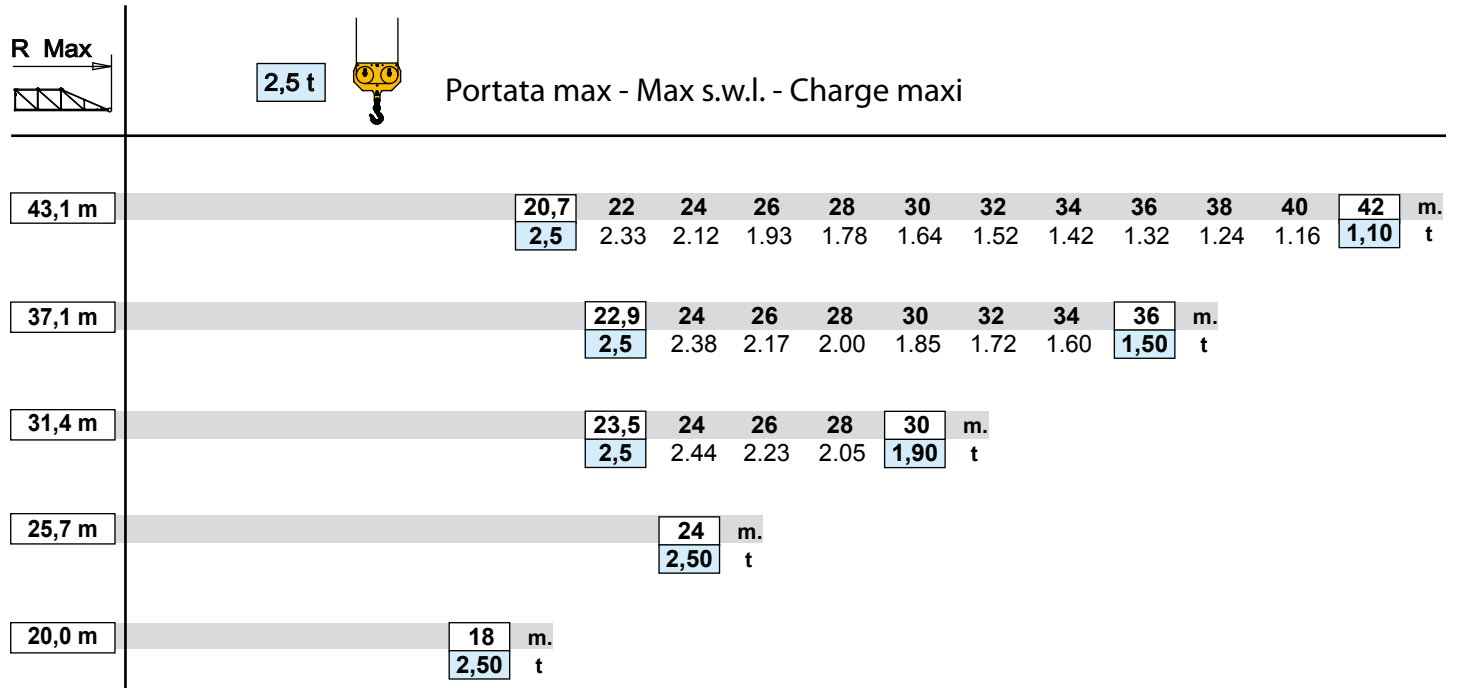
FEM 1,001 A3



\* optional

**Raggio e portata**

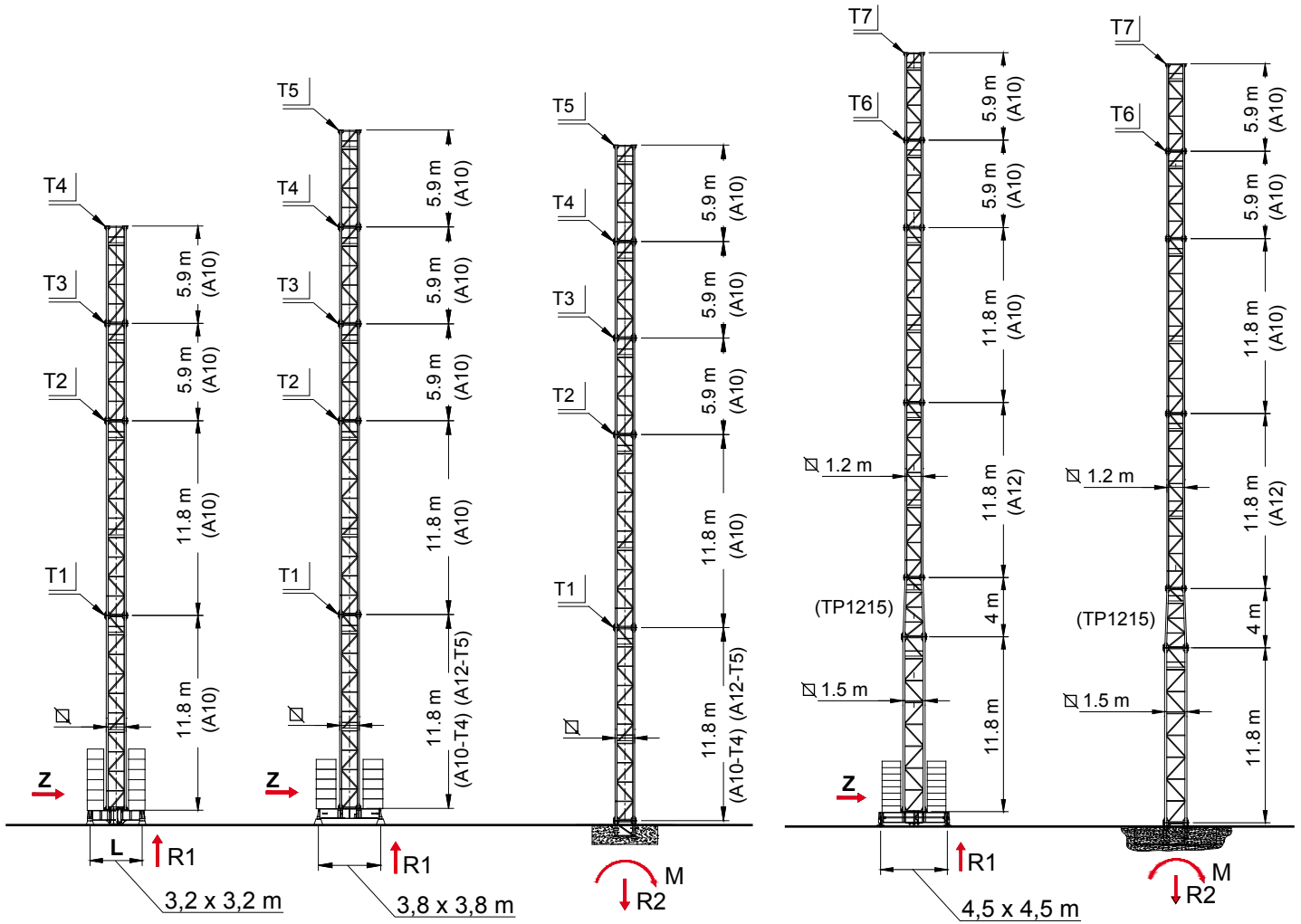
Radius and capacity - Portee e charge - Ausladung und Tragfahigkeit



\* optional

## Torre reazioni

### Mast reactions - Mast reactions - Maste Eckdrucke



T	H.s.g.	Z (t)	R1 (t)
7			
6			
5			
4	35.9 m	60	51
3	30.0 m	45	34
2	24.1 m	30	26

L = 3.2 x 3.2 m

T	H.s.g.	Z (t)	R1 (t)
7			
6			
5	41.9 m	60	59
4	36.0 m	50	42
3	30.1 m	35	29
2	24.2 m	20	22

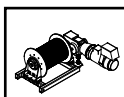
L = 3.8 x 3.8 m

T	H.s.g.	R2 (t)	M (tm)
7			
6			
5	41.2 m	29	146
4	35.3 m	28	104
3	29.4 m	26	68
2	23.5 m	25	54

T	H.s.g.	Z (t)	R1 (t)
7	51.8 m	75	74
6	45.9 m	60	59
5			
4			
3			
2			

L = 4.5 x 4.5 m

T	H.s.g.	R2 (t)	M (tm)
7	51.0 m	33	242
6	45.1 m	32	183
5			
4			
3			
2			

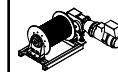


#### FV4 15 - Standard

Limite - Limit - Grenze  
Max. H.s.g. = T4

#### FV4 25 - Optional

Limite - Limit - Grenze  
Max. H.s.g. = T5

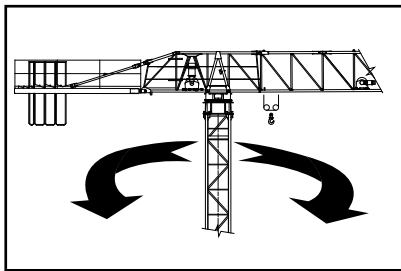


#### FV4 25 - Optional

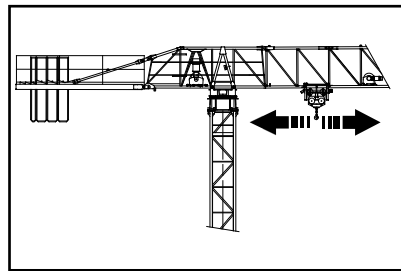
Limite - Limit - Grenze  
Max. H.s.g. = T7

## Meccanismi

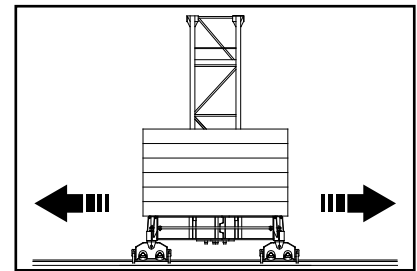
Driving units - Mechanisms d'entrainement - Antriebe



g/1'	Nm	Kw
0,3 / 0,6 / 0,8	-	3,7



m/1'	Nm	Kw
15 / 25 / 50	-	3,0



m/min	Nm	Kw
16	-	2 x 4

FORZA MOTRICE TOTALE  
TOTAL INSTALLED POWER  
PUISSANCE TOTALE DES MOTEURS  
GESAMT-MOTORENLEISTUNG

Kw	kVA	
FV4 15 11	20	400 V - 50 Hz
FV4 25 18,5	30	

CV - ch PS - HP	Kw	mt.
--------------------	----	-----

FV4 15	15	11	72
--------	----	----	----

FV4 25	25	18,5	235
--------	----	------	-----

Marcia - Step  
Cran - Stufe

m/1'	(t)	(t)	m/1'	(t)
------	-----	-----	------	-----

1	0 - 4	2,5	-	-	-
2	0 - 20	2,5	-	-	-
3	0 - 30	2,0	-	-	-
4	0 - 50	1,0	-	-	-

1	0 - 4	3,0	-	-	-
2	0 - 25	3,0	-	-	-
3	0 - 40	2,0	-	-	-
4	0 - 60	1,0	-	-	-

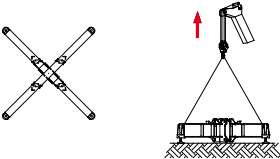
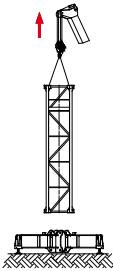
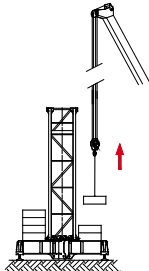
## Pesi e ingombri

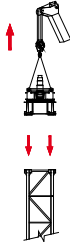
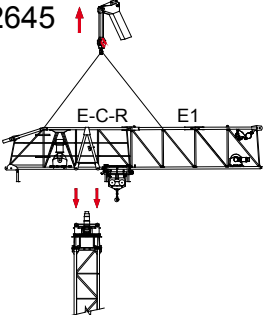
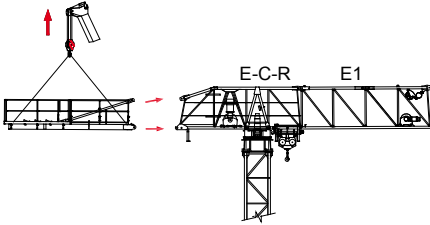
### Packing list - Liste de colisage - Kolli-liste

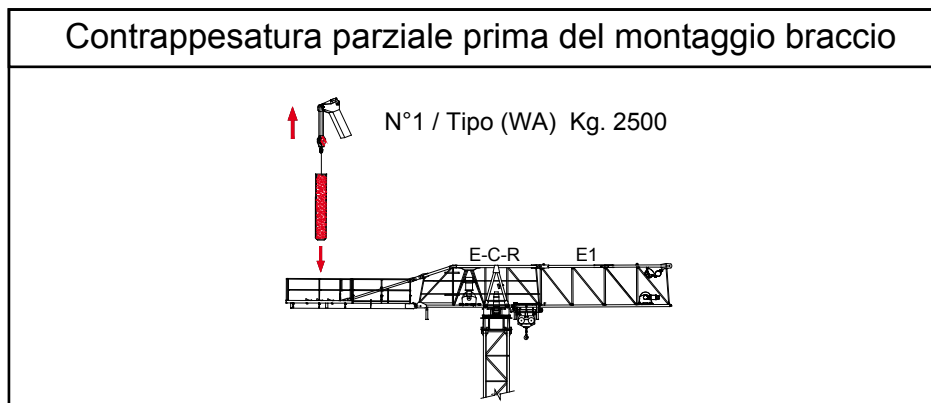
Pos. Item	Pezzi Pieces	Denominazione Description	Schizzo Sketch	Dimensioni Dimensions			Peso Weight (Kg)			
				L	W	H	Unit.	Total.		
1	1	Elemento di braccio Jib element Elément de flèche Ausleger	E 1		6.08	1.02	1.98	-	905	
	1		E 4		6.08	0.95	1.97	-	479	
	1		E 5		6.07	0.95	1.94	-	401	
	1		E 6		6.05	0.95	1.45	-	340	
	1		E 7		6.03	0.95	1.45	-	286	
	1		E 8		6.00	0.95	1.45	-	265	
	1		E 9		5.93	0.95	1.45	-	231	
2	1	Elemento rotazione, argano sollev., carrello e Q.E. Element turntable, hoisting winch, trolley jib, electrical box. Element tournante, treuil de levage, armoire électrique. Element gegenausleger, Hubwinde, Drehwerk.		5.83	1.18	2.5	-	1740		
	1	Rotazione; turntable; tournante; gegenausleger.		1.40	1.50	1.76	-	1360		
3	1	Elemento controbraccio. Counterjib, contreflèche, gegenausleger.		5.80	1.68	1.53	-	1150		
4	3	Blocchi di contrappeso Counterweight block Contre-poids Gegengewichtsblöcke		WA	0.65	0.50	3.08	2500	7500	
	1			WB	0.65	0.25	3.08	-	1250	
5	2	Elemento di torre Tower element Elément de mature Turmstück		L (A10)	11.8	1.20	1.38	2565	5130	
	2			W	5.9	1.20	1.38	1290	2580	
6	1	Tronchetto di fondazione Expendable foundation element Elément a sceller Fundamentanker		L	1.18	1.44	1.44	-	465	
7	1	Trave di base principale Base main beam Poutre de chassis de base Tragholm 1			3.2x3.2	5.00	0.85	0.95	-	1560
					3.8x3.8	5.85	0.85	0.95	-	1790
8	2	Semi trave di base Half base beam Semipoutre de chassis de base Tragholm 2			3.2x3.2	2.30	0.85	0.95	700	1400
					3.8x3.8	2.60	0.85	0.95	840	1680
9	24	Blocco di zavorra Base ballast block Lest de base Grundballastblöcken			3.2x3.2	3.50	1.00	0.34	2500	60000
	24				(BZ 250)	3.8x3.8	3.50	1.00	0.34	2500

## Montaggio

### Assembly - Montage - Versammlung

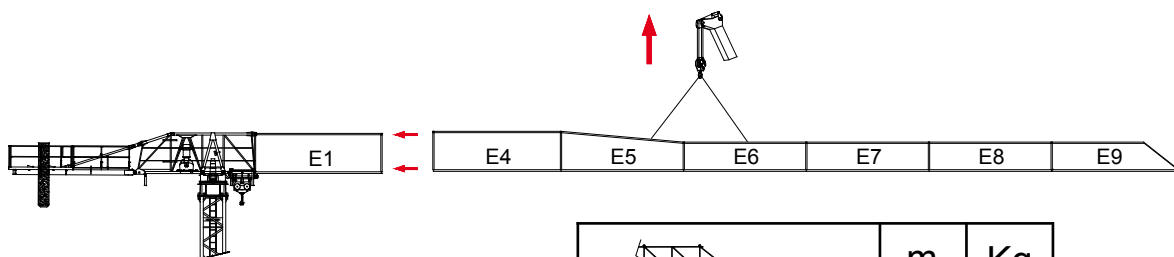
1	Base	2	Torre	3	Zavorra
	<p>L=3,2x3,2m Kg. 2960 L=3,8x3,8m Kg. 3470</p> 	<p>L=11,8m Kg. (2565 A10) Kg. (2940 A12)</p> <p>L=5,9m Kg. (1290 A10) Kg. (1490 A12)</p> 	 <p>Kg. 2500</p>		

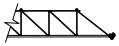
4	Rotazione	5	E-C-R / E1	6	Controbraccio
	<p>Kg. 1360</p> 	<p>Kg. 2645</p> 	<p>Kg. 1150</p> 		



## Montaggio

### Assembly - Montage - Versammlung



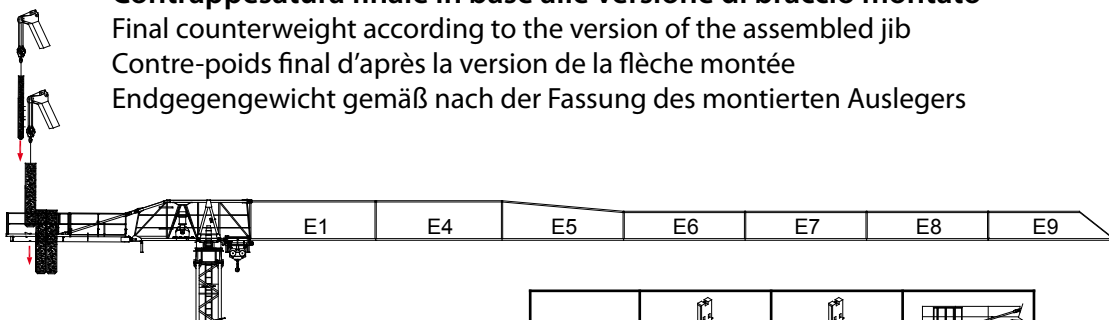
	m.	Kg.
E4 / E5 / E6 / E7 / E8 / E9	42	2160
E4 / E5 / E6 / E7 / E8	36	1910
E4 / E5 / E6 / E7	30	1630
E4 / E5 / E6	24	1330
E4 / E5	18	980

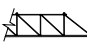



### Contrappesatura finale in base alle versione di braccio montato

Final counterweight according to the version of the assembled jib

Contre-poids final d'après la version de la flèche montée

Endgegengewicht gemäß nach der Fassung des montierten Auslegers



			
	(WA) 2500 Kg	(WB) 1250 Kg	Totale Kg
42 m	3	1	8750
36 m	3	1	8750
30 m	3	-	7500
24 m	2	1	6250
18 m	2	-	5000

Rev. "0" (04/09)

# CATTANEO

Luigi Cattaneo S.p.A.  
via Trieste 14 - 20020 Magnago (MI) Italia  
tel. +39 331 657132 - fax +39 331 305460  
www.cattaneogru.it  
e-mail: cattgru@tin.it