

Torre/Reazioni | Masts/Reactions | Mat/Réactions | Maste/Eckdrücke | Mástil/Reacciones | Tramo/Reacções

SF1100

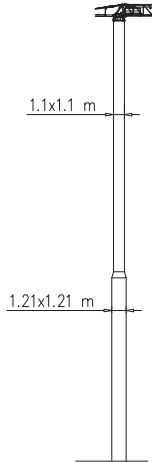
11.6 m \rightarrow 34.3 m

Torre/Masts/Mat/Maste/Mástil/Tramo							
 TTR	H[m]	2f/2f B0058		2f/1f BA058		1f/1f ST058	
		2f/1f	1f/1f	2f/1f	1f/1f	1f/1f	1f/1f
 TR3	29	1	1	3			
 TTD	23.2		1	3			
	17.4		1	2			
	11.6		1	1			

H=0-12 m	
R1	19 t
R2	18 t
R3	15 t
M	26 tm

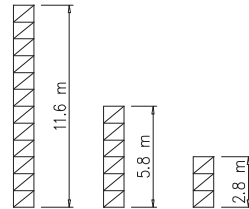
H=13-23 m	
R1	21 t
R2	20 t
R3	16 t
M	32 tm

H=24-29 m	
R1	
R2	23 t
R3	17 t
M	40 tm



Torre/Masts/Mat/Maste/Mástil/Tramo							
 CAF	H[m]	2f/2f B0058		2f/1f BA058		1f/1f ST058	
		2f/1f	1f/1f	2f/1f	1f/1f	1f/1f	1f/1f
 R2	29	1	1	3			
	23.2		1	3			
	17.4		1	2			
	11.6		1	1			

H=24-29 m	
R1	
R2	23 t
R3	17 t
M	40 tm



Peso zavorra | Ballast weight | Poids du lest | Ballastgewicht | Peso de lastre



H	Tot.
0-12 m	22000 kg
13-23 m	26400 kg
24-29 m	30800 kg

Torre/Reazioni | Masts/Reactions | Mat/Réactions | Maste/Eckdrücke | Mástil/Reacciones | Tramo/Reações

SH1210

11.6 m → 34.3 m

Torre/Masts/Mat/Maste/Mástil/Tramo	H[m]	2f/2f ST030	2f/2f ST060	2f/2f ST120		
TRO TTD	42	7				
	36	6				
	30	5				
	24	4				
	18	3				

H=0–18 m	
R1	18 t
R2	17 t
R3	17 t
M	28 tm

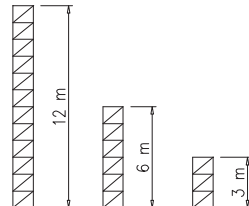
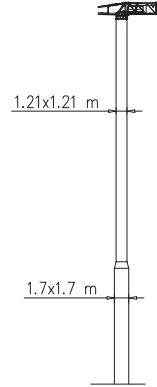
H=19–30 m	
R1	21 t
R2	20 t
R3	19 t
M	40 tm

H=31–36 m	
R1	26 t
R2	25 t
R3	20 t
M	48 tm

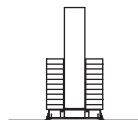
Torre/Masts/Mat/Maste/Mástil/Tramo	H[m]	2f/2f ST030	2f/2f ST060	2f/2f ST120		
CAF	42	7				
	36	6				
	30	5				
	24	4				
	18	3				

H=37–42 m	
R1	26 t
R2	69 t
R3	40 t
M	185 tm

Torre/Masts/Mat/Maste/Mástil/Tramo	H[m]	2f/2f ST030	2f/2f ST060	2f/2f ST120		
CATR CATC	36	6				
	30	5				
	24	4				
	18	3				
	12	2				




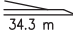

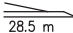

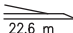

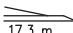
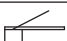
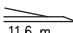
Peso zavorra | Ballast weight | Poids du lest | Ballastgewicht | Peso de lastre



H	Tot.
0–18 m	18000 kg
19–30 m	24000 kg
31–36 m	36000 kg
37–42 m	60000 kg

Curve di carico | Courbes de charges | Load diagrams | LastKurven | Curvas de cargas

Pmax 2400 kg

	5460 kg	 34.3 m	2	15.5	19.0	22.6	28.5	34.3	m
	2400		2400	1800	1500	1200	1000	kg	
	4380 kg	 28.5 m	2	17.3	21.0	22.6	28.5	m	
	2400		2400	1800	1680	1350	kg		
	3810 kg	 22.6 m	2	19.0	22.6	m			
	2400		2400	1800	kg				
	2730 kg	 17.3 m	2	17.3	m				
	2400		2400	kg					
	1650 kg	 11.6 m	2	11.6	m				
	2400		2400	kg					



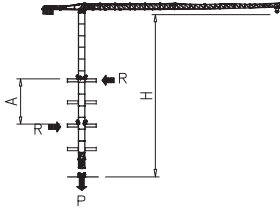
Pesi e ingombri | Packing list | Liste de colisage | Gewicht und abmessungen

Denominazione Description	Disegno Draw	Pezzi Pieces	Dimensioni-Dimensions (mm)			Peso-Weight (kg)		
			L	W	H	Unit	Total	
Elemento di braccio Jib element Elément de èche Elemento de flecha	n°6	1	5910	800	1500	800	-	
	n°5	1	5890	760	1260	460	-	
	n°4	1	5870	760	1050	390	-	
	n°3	1	5850	760	1040	285	-	
	n°2	1	5830	760	1020	205	-	
	n°1	1	5820	760	1020	180	-	
	Punta braccio	1	410	760	690	45	-	
Contorbraccio completo Complete counterjib Contreflèche complète Contraflecha completa		1	9000	1650	1230	1600	-	
Gruppo girevole Slewing group Table tournante Grupo giratorio		SF1100	1	1600	1350	1830	1900	-
		SH1210	1	1600	1350	1830	2000	-
Carrello Trolley Chariot Carretilla		1	880	980	650	75	-	
Elemento di torre Mast element Elément de mât Elemento de torre	ST028	SF1100	-	2800	1100	1100	550	-
	ST030	SH1210	-	3000	1210	1210	840	-
	ST058	SF1100	-	5800	1100	1100	1010	-
	ST060	SH1210	-	6000	1210	1210	1490	-
	ST116	SF1100	-	11600	1100	1100	1900	-
	ST120	SH1210	-	12000	1210	1210	3000	-
	B0028	SF1100	-	2800	1100	1100	600	-
	B0030	SH1210	-	3000	1210	1210	900	-
	B0058	SF1100	-	5800	1100	1100	1260	-
	B0060	SH1210	-	6000	1210	1210	2120	-
	B0116	SF1100	-	11600	1100	1100	2370	-
	B0120	SH1210	-	12000	1210	1210	3500	-
	BA028	SF1100	-	2800	1100	1100	555	-
	BA030	SH1210	-	3000	1210	1210	870	-
	BA058	SF1100	-	5800	1100	1100	1020	-
	BA060	SH1210	-	-	-	-	-	-
	BA116	SF1100	-	11600	1100	1100	2030	-
	BA120	SH1210	-	-	-	-	-	-

Pesi e ingombri | Packing list | Liste de colisage | Gewicht und abmessungen

Denominazione Description	Disegno Draw	Pezzi Pieces	Dimensioni-Dimensions (mm)			Peso-Weight (kg)		
			L	W	H	Unit	Total	
Blocchi contrappeso Counterweight block Contre-poids Bloques de contrapeso		VS10	2	850	420	1300	1080	2160
		VX16	2	850	420	2000	1650	3300
Carro di base Base carriage Chassis de base Cruceta de base		2.8x2.8	1	4100	520	660	1050	1050
		3.2x3.2	1	4670	520	660	1160	1160
		2.8x2.8	2	1900	340	660	480	960
		3.2x3.2	2	2180	340	660	550	1100
Elemento a perdere Disposable frame Chassis a perdre Bastidor desechable		SF1100	1	1840	1910	1910	1430	-
		SH1210	1	2600	2260	2260	2030	-
Elemento recuperabile Recoverable frame Chassis recuperable Bastidor recuperable		SF1100	1	1300	2170	2170	1720	-
		SH1210	1	1300	2620	2620	1860	-
Bogie di traslazione Driven bogie Boggie motorisèe Balancin de traslaciòn		4	1160	700	600	700	2800	
Blocco zavorra di base Base ballast block Lest de base Blaque de lastre		2.8x2.8	-	3200	1000	300	2200	-
		3.2x3.2	-	3600	1150	300	3000	-
Corsoio di montaggio Climbing cage Cage de montage Jaula de montaje		1	8300	1600	1500	3000	-	

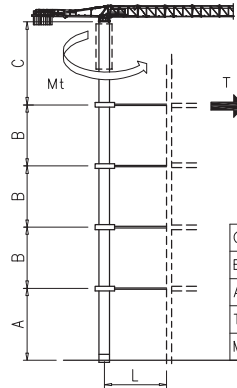
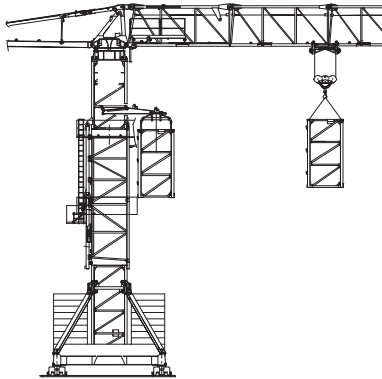
Gru in cavedio | T elescopage sur dalles | Climbing crane | Kletterkrane im Geb aude



SH1210	H (m)	A (m)	R (t)	P (t)
	30.0	6	25.75	33.0
		7	22.96	
		8	20.88	
		9	19.25	

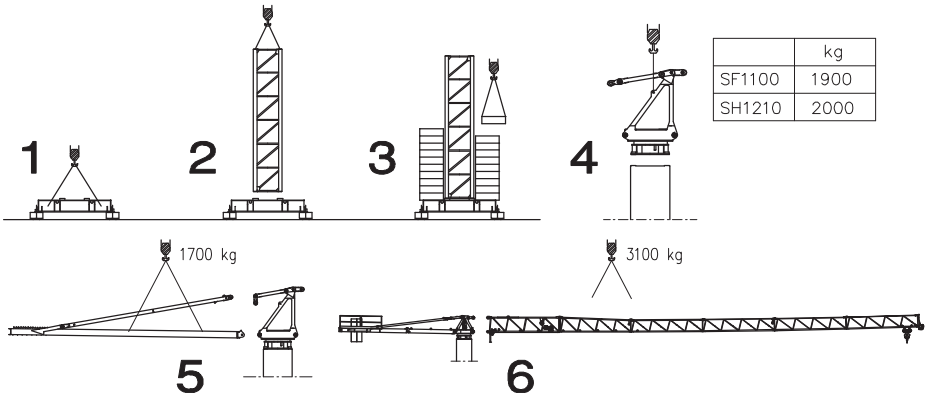
Apertura passaggio gru
Opening for crane passing

Sopralzo idraulico | Telescopable | External climbing | Kletterkrane



	SH1210	SK1700
C	27.0 m	27.3 m
B	17.0 m	15.6 m
B	32.0 m	39.5 m
T	19 m	23.4 m
MT	23 t xm	26 t xm

Montaggio | Montage | Erection | Montage | Montaje | Montagem



	kg
SF1100	1900
SH1210	2000

1700 kg

3100 kg

Meccanismi | Mechanisms | Mécanismes | Antriebe | Mecanismos

Sollevamento M07.47 Hoisting Lavage Heben Elevación Elevação						M07.47 7.5 kW 18 kVA 110 m	
	m/min	3	16	36	40		47
	t	2.4	2.4	1	0.8		0.4

Carrello Trolleying Distribution Katzfahren Distribuição Distribuição			0 → 70	m/min	1.1 kW	Potenza elettrica necessaria Puissance électrique nécessaire Necessary electric power Anschlusswert – Potencia
Rotazione Slewing Orientation Schwenken Orientación Rotação			0 → 0,7	giri/min tr/min rp/min	4 kW	
Traslazione Travelling Translation Kranfahren Traslación Traslación			0 → 18	m/min	3.7 kW	

Rete elettrica | Réseau | Mains supply | Netzstrom | Red | Rede electrica

400 V - 50 Hz
480 V - 60 Hz