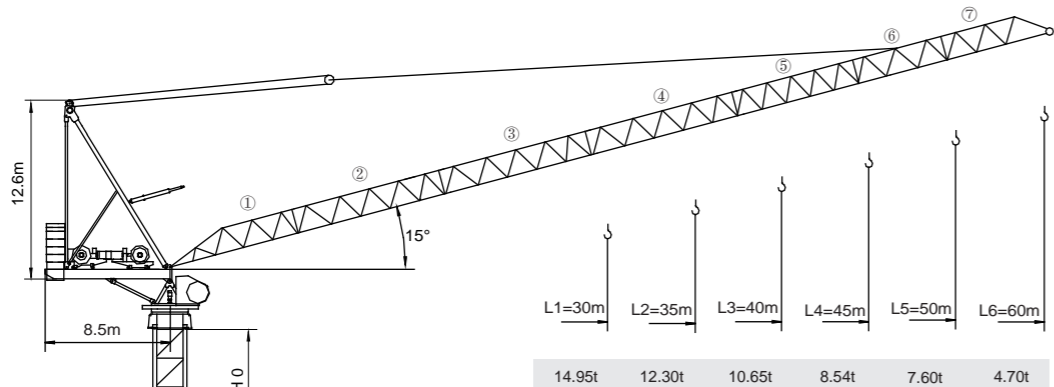


永茂建机
YONGMAO

STL420A
25t



L1=30m	L2=35m	L3=40m	L4=45m	L5=50m	L6=60m
14.95t	12.30t	10.65t	8.54t	7.60t	4.70t

臂架代號 Jib code		Jib code	
①	UJ501B	L1	(30m) ①+②+⑥+⑦
②	UJ402B	L2	(35m) ①+②+③+⑦
③	UJ403B	L3	(40m) ①+②+③+⑥+⑦
④	UJ403B	L4	(45m) ①+②+③+④+⑦
⑤	UJ404B	L5	(50m) ①+②+③+④+⑥+⑦
⑥	UJ5511B	L5	(50m) ①+②+③+④+⑥+⑦
⑦	UJ505B	L6	(60m) ①+②+③+④+⑤+⑥+⑦



CE FEM

Luffing

V5.0-09012016

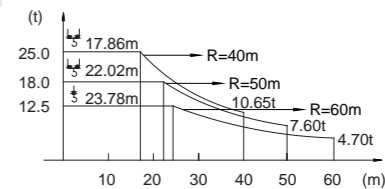
動臂系列

STL420A
25t

載荷表 Load Chart

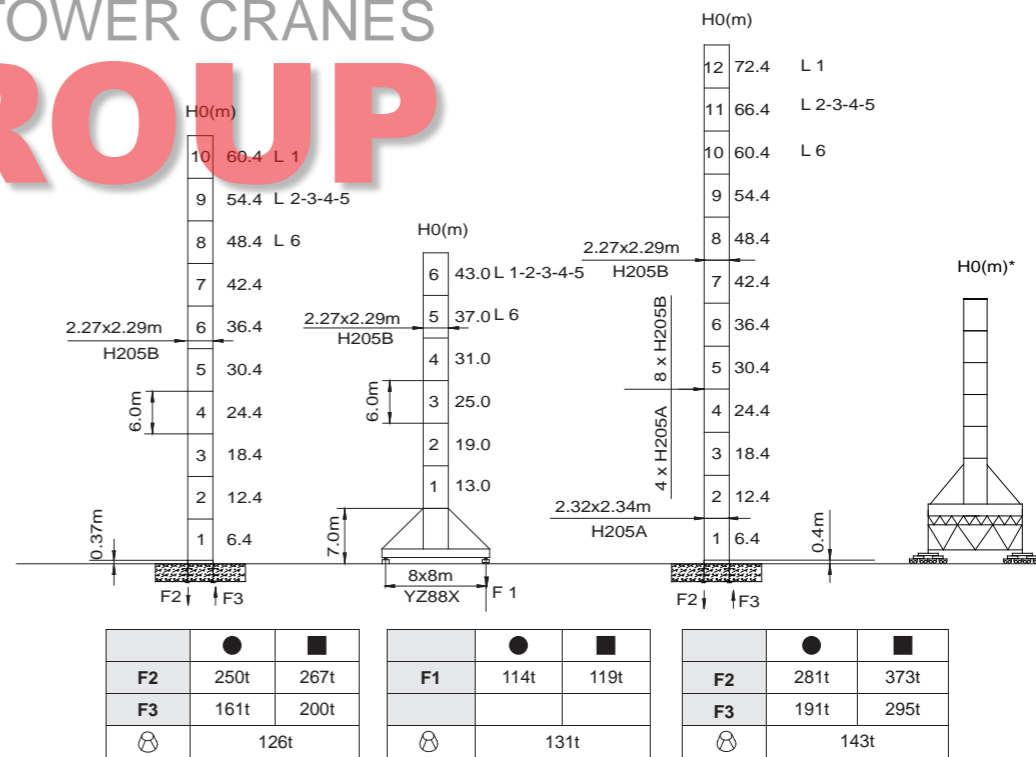
U-25-A(B)-1-V1.0

R (m)	倍率 Fall	R(C max) (m)	C max (t)	20	22	24	26	28	30	35	40	45	50	55	60
60	↓	5.73~23.78	12.50	12.50	12.50	12.38	11.40	10.55	9.82	8.36	7.26	6.41	5.72	5.17	4.70
50	↓	4.85~31.67	12.50	12.50	12.50	12.50	12.50	12.50	12.50	11.23	9.72	8.54	7.60		
	↘	4.85~22.02	18.00	18.00	18.00	16.47	15.16	14.03	13.06	11.11	9.65	8.51	7.60		
45	↓	4.38~31.67	12.50	12.50	12.50	12.50	12.50	12.50	12.50	11.23	9.72	8.54			
	↘	4.38~22.10	18.00	18.00	18.00	16.53	15.21	14.08	13.10	11.15	9.68	8.54			
40	↓	3.93~34.28	12.50	12.50	12.50	12.50	12.50	12.50	12.50	12.23	10.65				
	↘	3.93~17.86	25.00	22.23	20.12	18.37	16.88	15.61	14.51	12.30	10.65				
35	↓	3.48~34.47	12.50	12.50	12.50	12.50	12.50	12.50	12.50	12.30					
	↘	3.48~17.86	25.00	22.23	20.12	18.37	16.88	15.61	14.51	12.30					
30	↓	3.03~30.00	12.50	12.50	12.50	12.50	12.50	12.50	12.50						
	↘	3.03~18.30	25.00	22.81	20.66	18.88	17.37	16.07	14.95						



TOWER CRANES

GROUP



F2	● 250t	■ 267t	F1	● 114t	■ 119t	F2	● 281t	■ 373t
F3	● 161t	■ 200t	F1	● 131t	■ 131t	F3	● 191t	■ 295t
	● 126t						● 143t	

● 工作狀態支反力 In service reaction ■ 非工作狀態支反力 Out of service reaction
 ⊕ 整機自由高度重量 (不含平衡重及壓重重量) Total weight of free standing crane (excludes counter weight & ballast.)

Luffing STL420A



YONGMAO HOLDINGS LIMITED

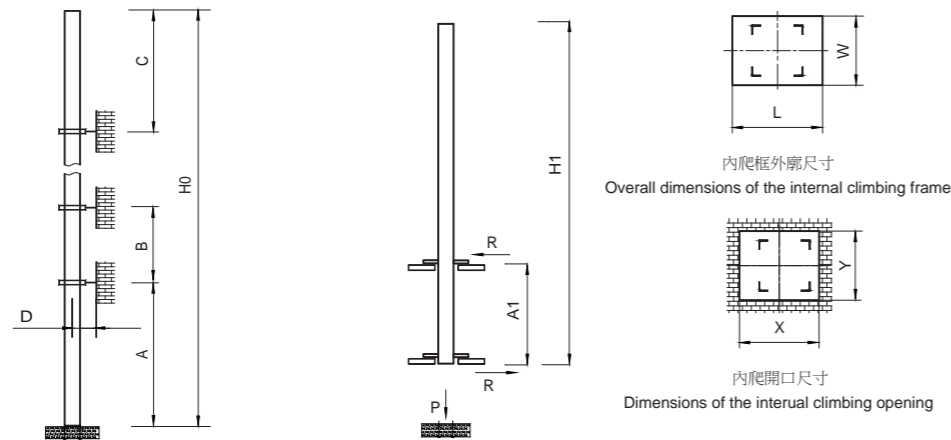


YONGMAO HOLDINGS LIMITED

Luffing STL420A
Luffing STL420A

動臂系列

STL420A
25t



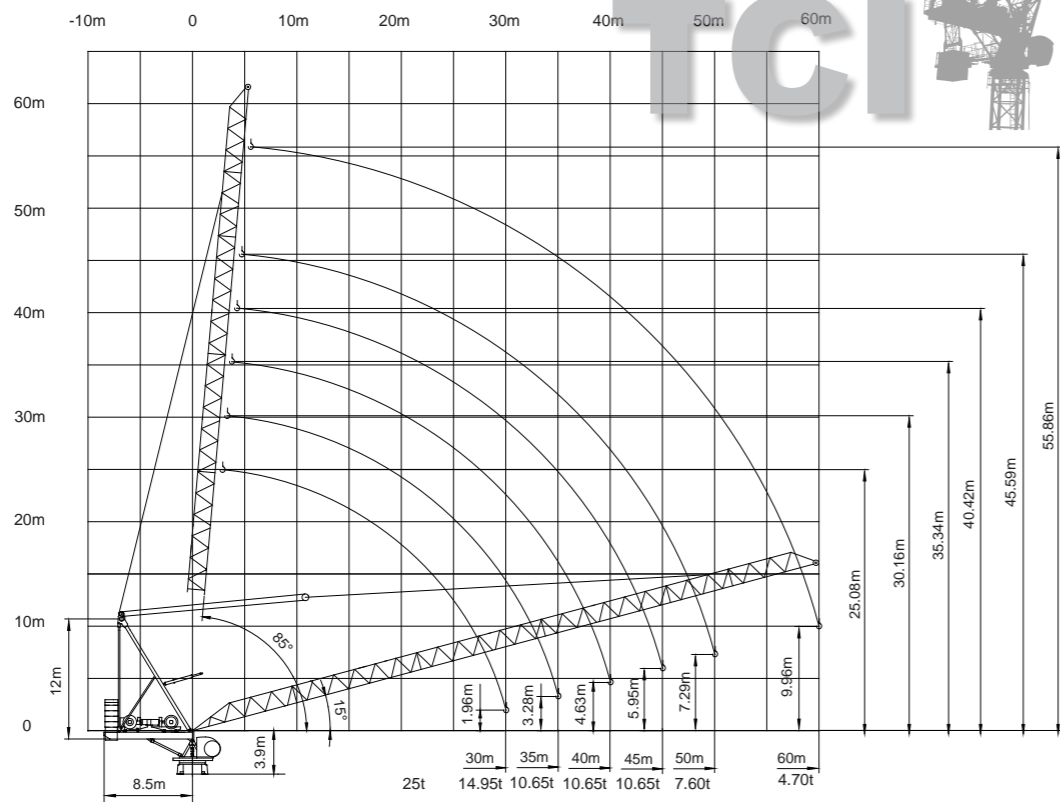
塔身節 Mast	臂長 Jib length	A (m)	B (m)	C (m)	D (m)	H0 (m)
H205B	L1	30/48	24/32	32	>4	400 >400*
	L2-3-4-5	30/42	24/30	30		
	L6	30/36	24/28	28		

塔身節 Mast	臂長 Jib length	H1 (m)	A1 (m)	P (t)	R (t)	X (m)	Y (m)	L (m)	W (m)
H205B	L1	60	18	160	34	3.28	2.40	3.50	3.02
	L2-3-4-5	48		158	32				
	L6	42		154	31				

附著道數 Number of tie collars=(H0-A-C)/B+1

超過100m高度，需降低載荷，請與公司聯繫。

Load should be reduced when the height exceeds 100m. Please contact Yongmao for details.



1 1
7 8
9 0

STL420A
25t

主要性能參數 Specifications

機構 Mechanism	●		☺		電動機 Motor kW	
	m/min	t	m/min	t		
160LFV125DB	0-64 0-76 0-128	12.5 10.0 4.0	0-32 0-38 0-64	25.0 20.0 8.0	900m >900m*	160
90DFV60B	15° - 85° 3.0min				90	
RTC290	0 - 0.8 rpm				2x145 N·m	
RT	12.5 - 25 m/min				4x2.6/5.2	

電壓 Pressure	kVA
380V (± 10%) 50 Hz	330

* 與製造商聯繫 Contact us, please.

☆ 标准配置 Standard configuration.

TOWER CRANES
GROUP

本技術參數不受法律約束，技術資訊請詳見相應說明書。

These specifications and data are not legally binding. For any technical information, please refer to corresponding instructions.



YONGMAO HOLDINGS LIMITED



YONGMAO HOLDINGS LIMITED

Luffing STL420A
Luffing STL420A