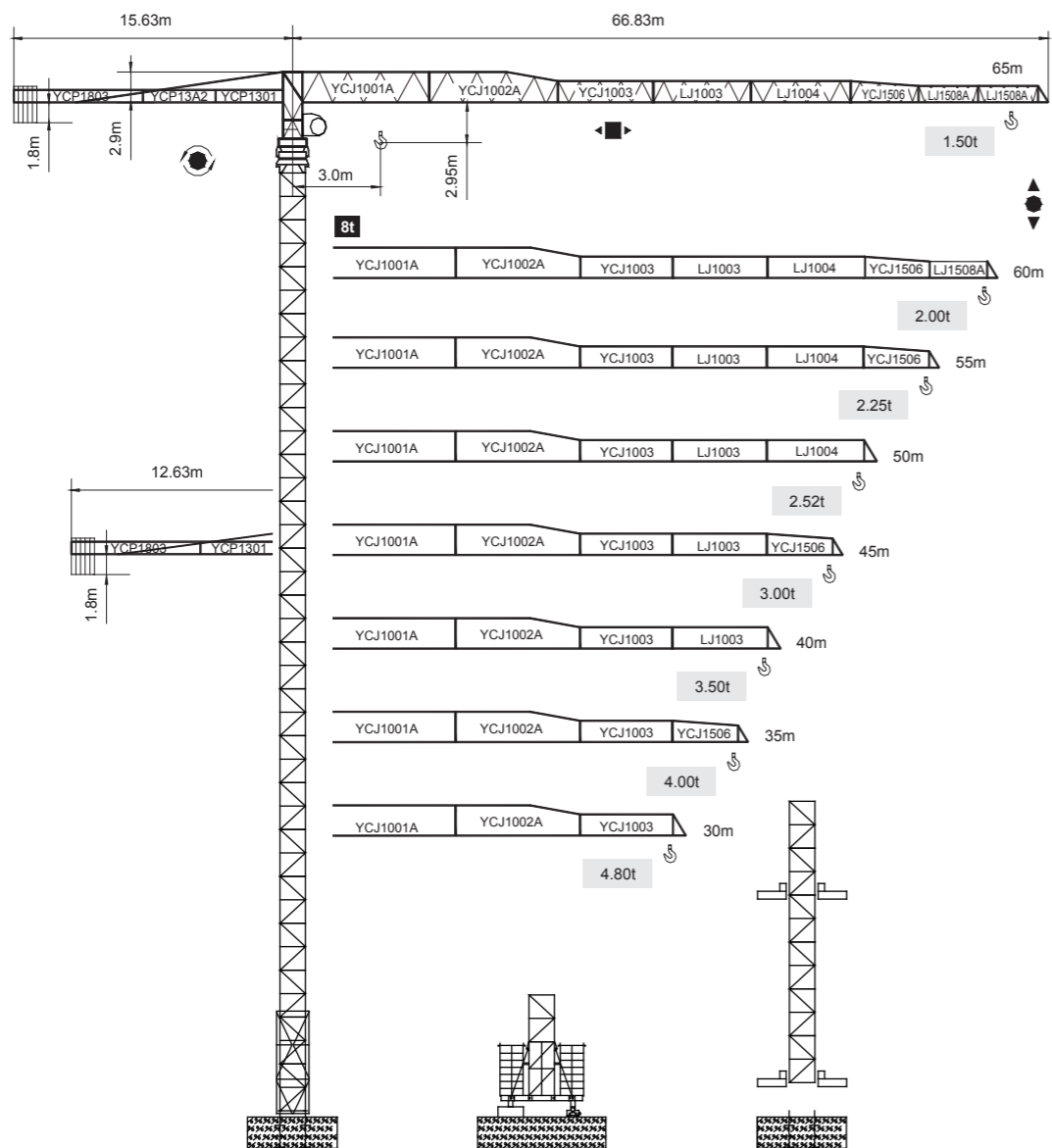


永茂建机
YONGMAO

STT153
8t



CE FEM

Topless

V 5.0-09112014

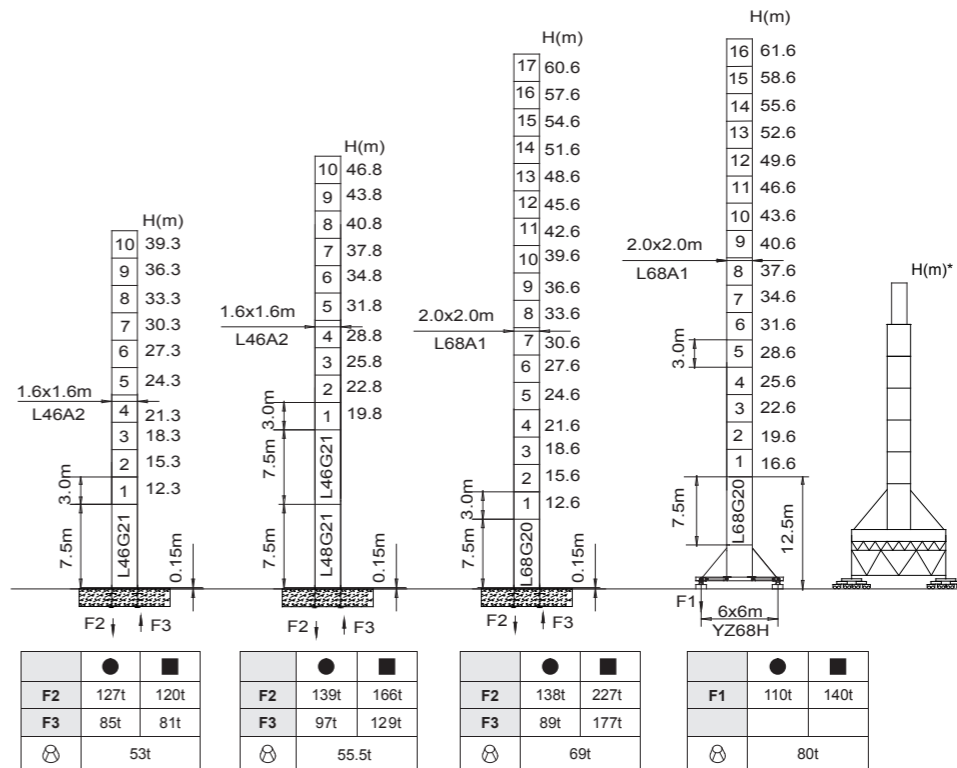
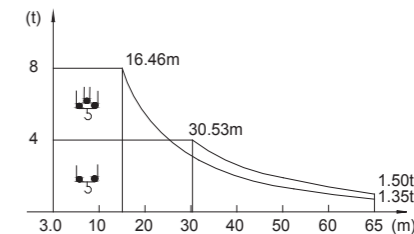
平頭系列

STT153
8t

載荷表 Load Chart

STC-8-A(B)-4-V1.0

R (m)	倍率 Fall	R(C _{max}) (m)	C _{max} (t)	15	20	25	30	35	40	45	50	55	60	65
65	☀	16.46	8.00	8.00	6.34	4.86	3.89	3.21	2.70	2.30	1.99	1.74	1.53	1.35
	☾	30.53	4.00	4.00	4.00	4.00	4.00	3.37	2.86	2.46	2.15	1.89	1.68	1.50
60	☀	18.61	8.00	8.00	7.33	5.65	4.54	3.76	3.18	2.73	2.38	2.09	1.85	
	☾	34.57	4.00	4.00	4.00	4.00	4.00	3.92	3.34	2.89	2.53	2.24	2.00	
55	☀	18.65	8.00	8.00	7.38	5.69	4.57	3.79	3.20	2.75	2.39	2.10		
	☾	34.63	4.00	4.00	4.00	4.00	4.00	3.93	3.35	2.90	2.54	2.25		
50	☀	18.52	8.00	8.00	7.30	5.62	4.52	3.75	3.17	2.72	2.37			
	☾	34.37	4.00	4.00	4.00	4.00	4.00	3.90	3.32	2.88	2.52			
45	☀	19.13	8.00	8.00	7.58	5.85	4.71	3.91	3.31	2.85				
	☾	35.51	4.00	4.00	4.00	4.00	4.00	4.00	3.46	3.00				
40	☀	19.29	8.00	8.00	7.66	5.91	4.76	3.95	3.35					
	☾	35.79	4.00	4.00	4.00	4.00	4.00	4.00	3.50					
35	☀	19.46	8.00	8.00	7.74	5.98	4.82	4.00						
	☾	35.00	4.00	4.00	4.00	4.00	4.00	4.00						
30	☀	19.39	8.00	8.00	7.72	5.95	4.80							
	☾	30.00	4.00	4.00	4.00	4.00	4.00	4.00						



● 工作狀態支反力 In service reaction ■ 非工作狀態支反力 Out of service reaction
 ⊕ 整機自由高度重量 (不含平衡重及壓重重量) Total weight of free standing crane (excludes counter weight & ballast.)

Topless STT153

0 3 7
0 3 8

Topless STT153
Topless STT153



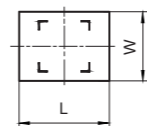
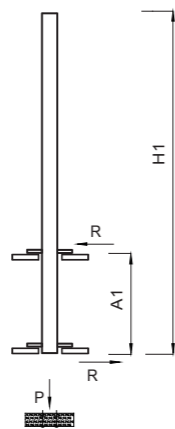
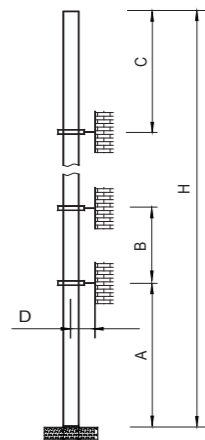
YONGMAO HOLDINGS LIMITED



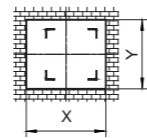
YONGMAO HOLDINGS LIMITED

STT153

8t



內爬框外廓尺寸
Overall dimensions of the internal climbing frame



內爬開口尺寸
Dimensions of the internal climbing opening

塔身節 Mast	A (m)	B (m)	C (m)	D (m)	H (m)
L46A2	34.5	24	33.3	>3.2	$\frac{235}{>235}^*$
L68A1	45	36	45.6	>3.6	$\frac{270}{>270}^*$

塔身節 Mast	H1 (m)	A1 (m)	P (t)	R (t)	X (m)	Y (m)	L (m)	W (m)
L46A2	27.3	7-11	76	26	2.15	1.8	2.45	2.38
L68A1	54.6	16	100	21	2.58	2.17	2.78	3.29

附著道數 Number of tie collars $= (H-A-C)/B+1$

超過100m高度，需降低載荷，請與公司聯繫。

Load should be reduced when the height exceeds 100m. Please contact Yongmao for details.

主要性能參數 Specifications

機構 Mechanism	👁		👁		🌀	電動機 Motor kW	
	m/min	t	m/min	t			
▲ ▼	30SWR20 ☆	0-40 0-80	4.0 2.0	0-20 0-40	8.0 4.0	360m	30/30
	30LFV20	0-40 0-48 0-80	4.0 2.0 0.75	0-20 0-24 0-40	8.0 4.0 1.5	500m	30
	45LFV20	0-40 0-80	4.0 1.5	0-20 0-40	8.0 3.0	1090m >1090m *	45
◀ ▶	DTC95A ☆	0-57m/min					95N.m
	4DFVA	0-57m/min					4
🌀	YMD50 ☆	0-0.7rpm					2 x 5
	RTC190	0-0.7rpm					2x95N.m
	4RFCV	0-0.7rpm					2x95N.m
👁	RT	12.5-25m/min					2x2.6/5.2

供電容量 Power supply	kVA
380V (±10%) 50 Hz	30LFV20, 30SWR20 : 45 45LFV20 : 70

* 與製造商聯繫 Contact us, please.

☆ 标准配置 Standard configuration.

本技術參數不受法律約束，技術資訊請詳見相應說明書。

These specifications and data are not legally binding. For any technical information, please refer to corresponding instructions.

平頭系列

STT153

8t

0 0
3 4
9 0

Topless STT153
Topless STT153



YONGMAO HOLDINGS LIMITED



YONGMAO HOLDINGS LIMITED