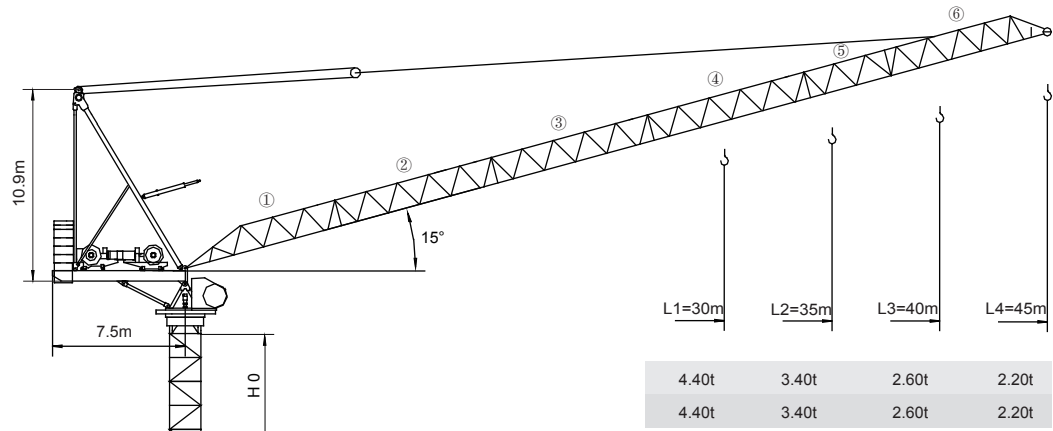


永茂建机
YONGMAO

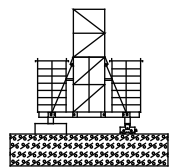
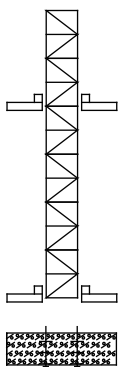
STL120
8/6t



4.40t	3.40t	2.60t	2.20t
4.40t	3.40t	2.60t	2.20t

臂架代號
Jib code

①	SJ2901A3	L1	(30m) ①+②+③+⑥
②	SJ2502A2	L2	(35m) ①+②+③+⑤+⑥
③	SJ2003A2	L3	(40m) ①+②+③+④+⑥
④	SJ2002	L3	(40m) ①+②+③+④+⑥
⑤	SJ2503	L3	(40m) ①+②+③+④+⑥
⑥	SJ2104A1	L4	(45m) ①+②+③+④+⑤+⑥



CE FEM

Luffing

V 5.0-09012016

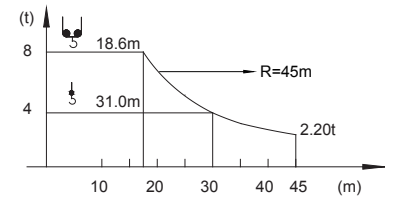
動臂系列

STL120
8/6t

載荷表 Load Chart

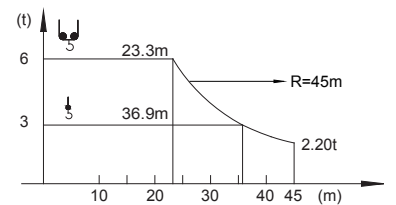
8t

R (m)	倍率 Fall	R(C max) (m)	C max (t)	S-8-A(B)-1-V1.0					
				20	25	30	35	40	45
45	↓	3.50~31.00	4.00	4.00	4.00	4.00	3.30	2.60	2.20
	↘	3.50~18.60	8.00	7.30	5.50	4.30	3.40	2.60	2.20
40	↓	3.10~31.60	4.00	4.00	4.00	4.00	3.40	2.60	
	↘	3.10~18.60	8.00	7.30	5.50	4.30	3.40	2.60	
35	↓	2.70~31.90	4.00	4.00	4.00	4.00	3.40		
	↘	2.70~18.60	8.00	7.40	5.60	4.40	3.40		
30	↓	2.30~30.00	4.00	4.00	4.00	4.00			
	↘	2.30~18.60	8.00	7.40	5.60	4.40			



6t

R (m)	倍率 Fall	R(C max) (m)	C max (t)	S-6-A(B)-1-V1.0					
				20	25	30	35	40	45
45	↓	3.50~36.90	3.00	3.00	3.00	3.00	3.00	2.60	2.20
	↘	3.50~23.30	6.00	6.00	5.50	4.30	3.40	2.60	2.20
40	↓	3.10~36.90	3.00	3.00	3.00	3.00	3.00	2.60	
	↘	3.10~23.30	6.00	6.00	5.50	4.30	3.40	2.60	
35	↓	2.70~35.00	3.00	3.00	3.00	3.00	3.00		
	↘	2.70~23.30	6.00	6.00	5.60	4.40	3.40		
30	↓	2.30~30.00	3.00	3.00	3.00	3.00			
	↘	2.30~23.30	6.00	6.00	5.60	4.40			



1 9 7
1 9 8

Luffing STL120

Luffing STL120
Luffing STL120



YONGMAO HOLDINGS LIMITED



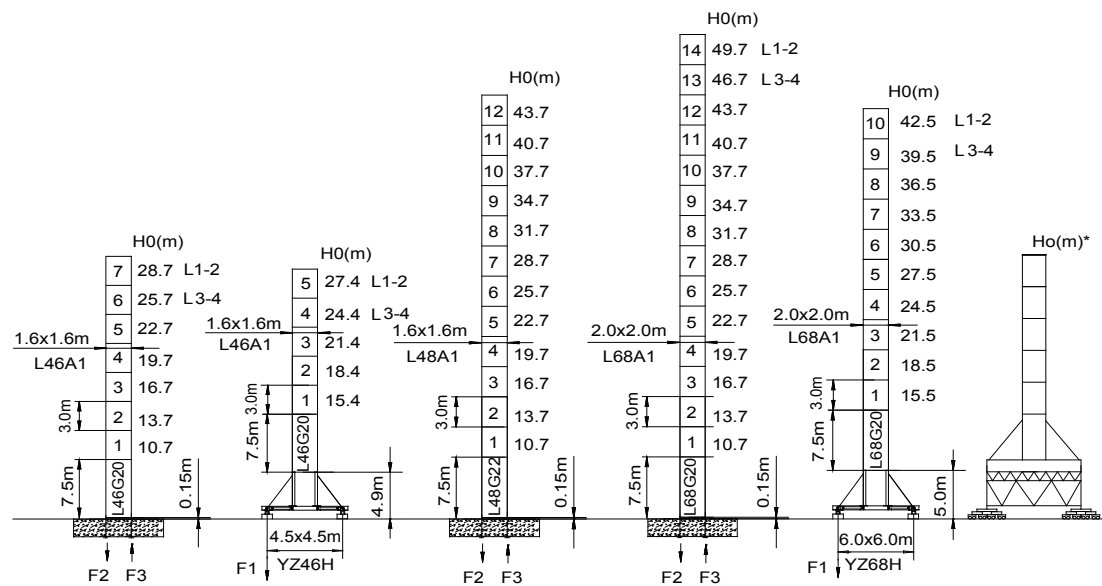
YONGMAO HOLDINGS LIMITED

STL120

8/6t

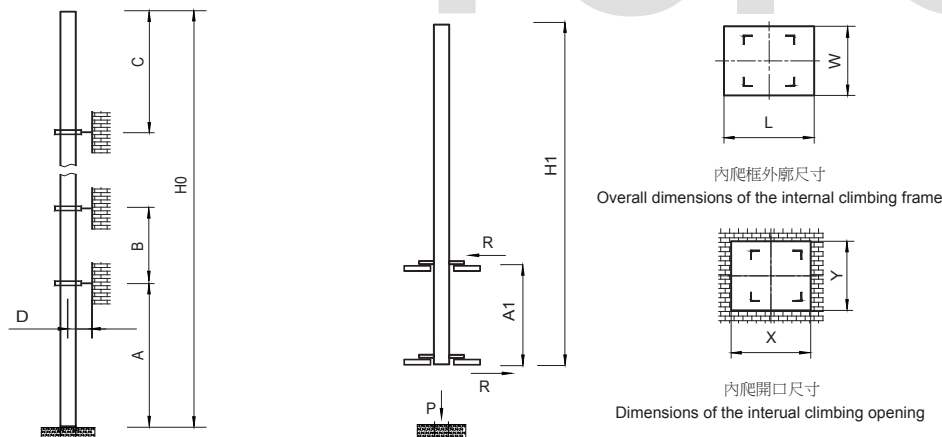
STL120

8/6t



	●	■		●	■		●	■		●	■	
F2	113t	151t		F1	60t	68t	F2	173t	236t	F2	122t	255t
F3	87t	126t					F3	140t	204t	F1	123t	168t
	46t				54t			61t			66t	
											73t	

● 工作狀態支反力 In service reaction ■ 非工作狀態支反力 Out of service reaction
 ⚙ 整機自由高度重量 (不含平衡重及壓重重量) Total weight of free standing crane (excludes counter weight & ballast)



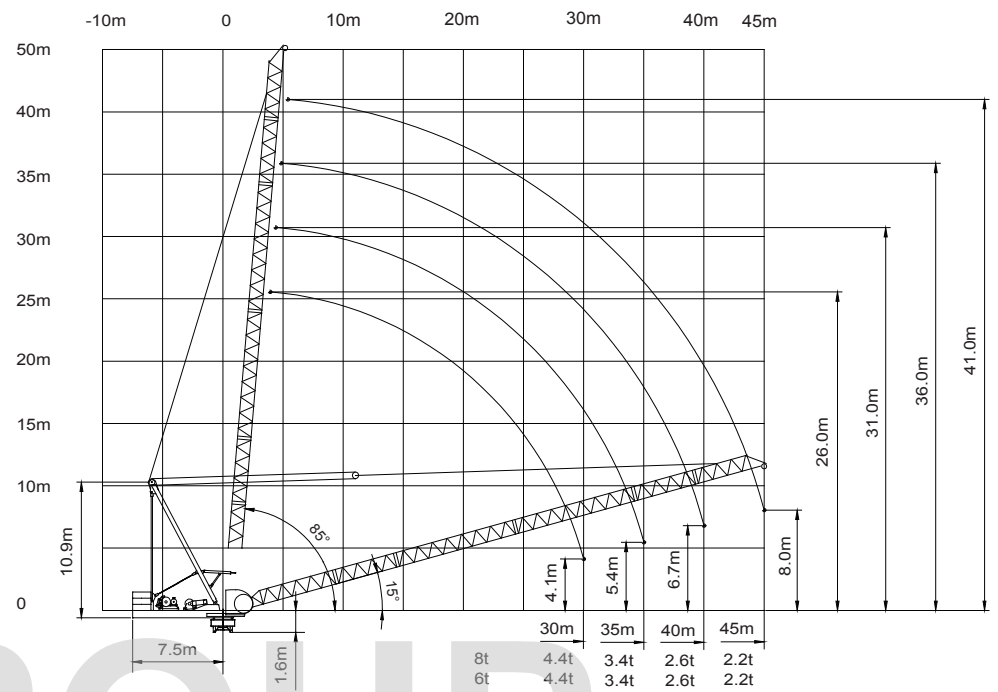
塔身節 Mast	臂長 Jib length	A (m)	B (m)	C (m)	D (m)	H0 (m)
L46A1	L1-2	24	15	22.5	>3.4	200 >200*
	L3-4	21	12	19.5		
L68A1	L1-2	39	33	40.5	>3.6	250 >250*
	L3-4	36	30	37.5		

塔身節 Mast	臂長 Jib length	H1 (m)	A1 (m)	P (t)	R (t)	X (m)	Y (m)	L (m)	W (m)
L46A1	L1-2	28.5	7.5-11	61	27.5	2.15	1.8	2.45	2.38
	L3-4	25.5	7.5-11	61	27.5				
L68A1	L1-2	46.5	16.5	82	25	2.58	2.17	2.78	3.29
	L3-4	46.5	16.5	82	25				

附著道數 Number of tie collars=(H0-A-C)/B+1

超過100m高度，需降低載荷，請與公司聯繫。

Load should be reduced when the height exceeds 100m. Please contact Yongmao for details.



主要性能參數 Specifications

機構 Mechanism	●		■		電動機 Motor kW	
	m/min	t	m/min	t		
8t	75LFV40	0-94	4.0	0-47	550m >550m*	75
		0-114	3.0	0-57		
		0-190	1.5	0-95		
6t	55LFV300	0-88	3.0	0-44	630m >630m*	55
		0-106	2.0	0-53		
		0-176	0.85	0-88		
45DFV40BI*			15°-85°	2.0min	45	
RTC190			0-0.7	rpm	2 x 95 N·m	
YMD50*			0-0.7	rpm	2 x 5	
RT			12.5-25	m/min	2x2.6/5.2	

電壓 Pressure	kVA	
380V (±10%) 50 Hz	75LFV40: 160	55LFV30: 135

* 與製造商聯繫 Contact us, please.
 ☆ 标准配置 Standard configuration.

本技術參數不受法律約束，技術資訊請詳見相應說明書。
 These specifications and data are not legally binding. For any technical information, please refer to corresponding instructions.

1 2
9 0
9 0

Luffing STL120
 Luffing STL120



YONGMAO HOLDINGS LIMITED



YONGMAO HOLDINGS LIMITED