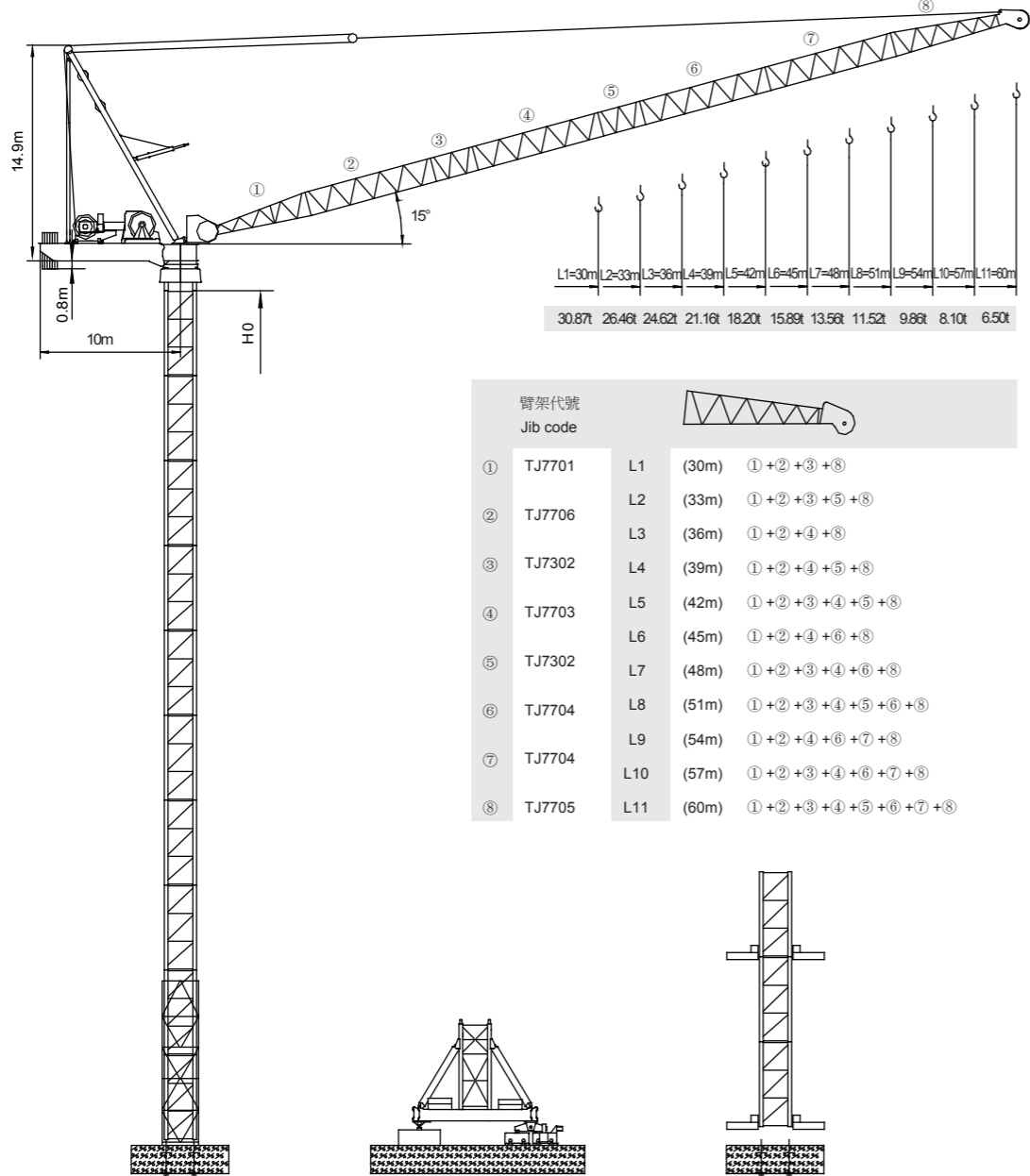


永茂建机
YONGMAO

STL1000
50t



CE FEM

Luffing

V5.0-0911014

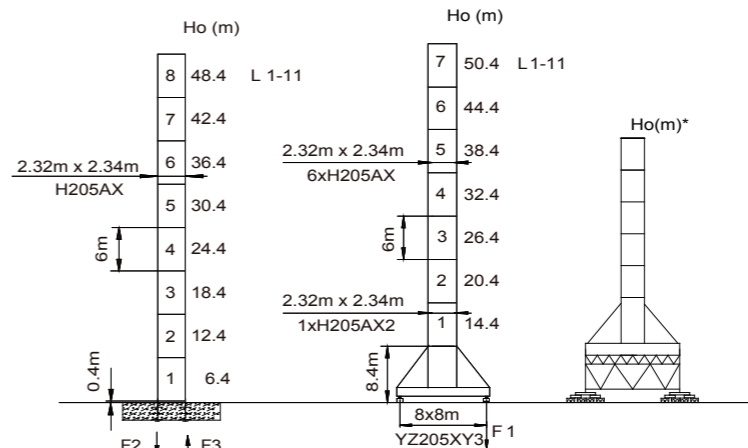
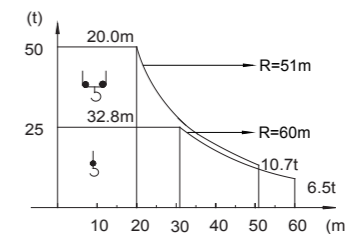
動臂系列

STL1000
50t

載荷表 Load Chart

STH-50-A(B)-1-V1.0

R (m)	倍率 Fall	R(Cmax) (m)	Cmax (t)	18	21	24	27	30	33	36	39	42	45	48	51	54	57	60
60	↓	6.47~32.80	25	25.00	25.00	25.00	25.00	25.00	24.64	21.18	18.29	15.84	13.73	11.90	10.30	8.88	7.63	6.50
57	↓	6.20~33.30	25	25.00	25.00	25.00	25.00	25.00	25.00	21.67	18.78	16.32	14.21	12.38	10.78	9.36	8.10	
54	↓	5.93~33.50	25	25.00	25.00	25.00	25.00	25.00	25.00	22.18	19.28	16.82	14.71	12.88	11.27	9.86		
51	↓	5.66~33.80	25	25.00	25.00	25.00	25.00	25.00	25.00	22.44	19.54	17.07	14.96	13.12	11.52			
48	↓	5.39~34.10	25	25.00	25.00	25.00	25.00	25.00	25.00	22.85	19.95	17.50	15.39	13.56				
45	↓	5.12~34.50	25	25.00	25.00	25.00	25.00	25.00	25.00	23.36	20.45	18.00	15.89					
42	↓	4.85~34.80	25	25.00	25.00	25.00	25.00	25.00	25.00	23.56	20.66	18.20						
39	↓	4.58~35.20	25	25.00	25.00	25.00	25.00	25.00	25.00	24.06	21.16							
36	↓	4.31~35.80	25	25.00	25.00	25.00	25.00	25.00	25.00	24.62								
33	↓	3.94~33.00	25	25.00	25.00	25.00	25.00	25.00	25.00									
30	↓	3.77~30.00	25	25.00	25.00	25.00	25.00	25.00										



F2	● 435t	■ 387t
F3	● 308t	■ 284t
	● 189t	

F1	● 197t	■ 177t
	● 234t	

● 工作狀態支反力 In service reaction ■ 非工作狀態支反力 Out of service reaction
 ⚖ 整機自由高度重量 (不含平衡重及壓重重量) Total weight of free standing crane (excludes counter weight & ballast)

Luffing STL1000



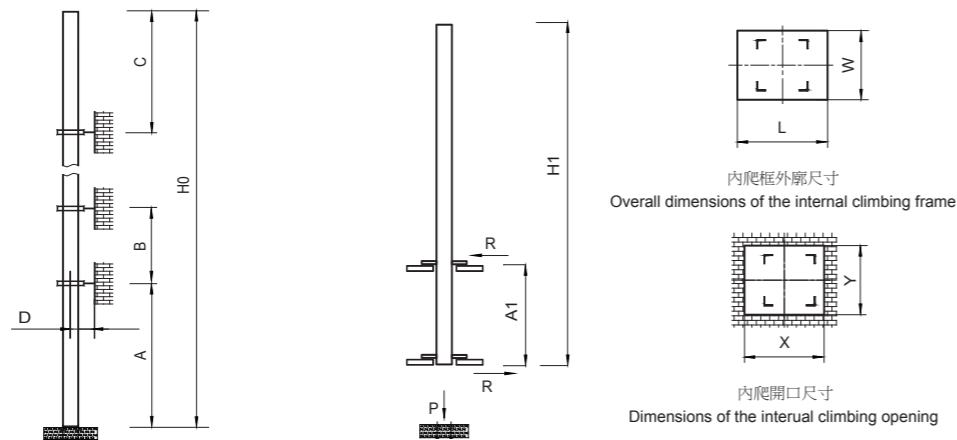
YONGMAO HOLDINGS LIMITED



YONGMAO HOLDINGS LIMITED

Luffing STL1000
Luffing STL1000

STL1000 50t



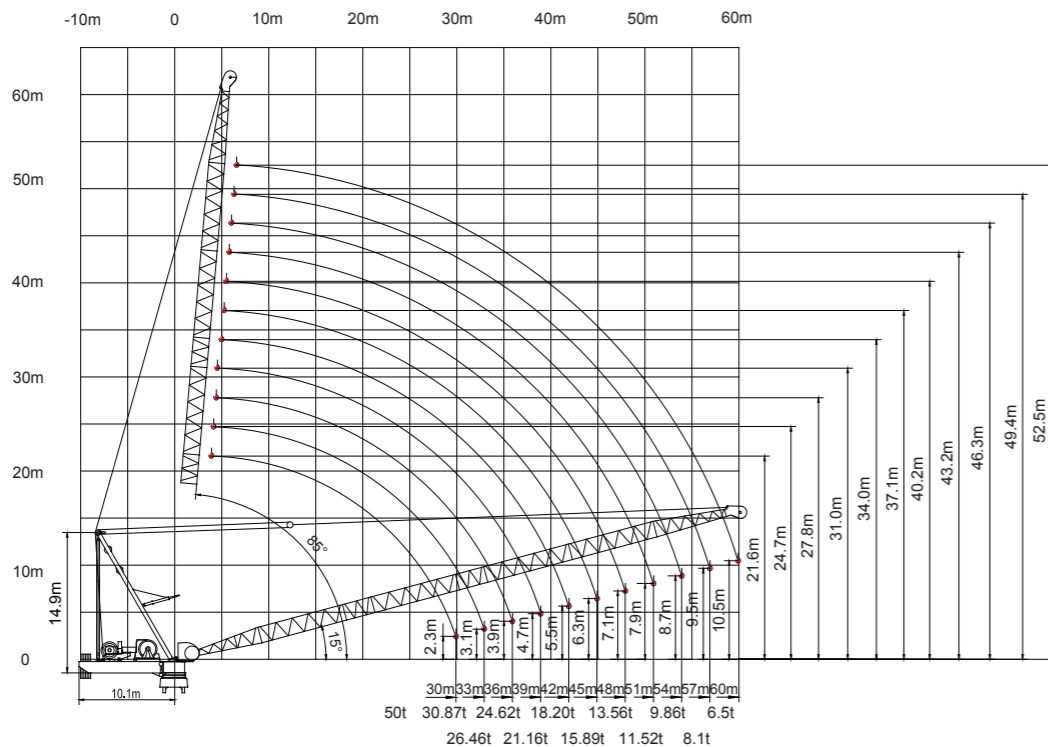
塔身節 Mast	臂長 Jib length	A (m)	B (m)	C (m)	D (m)	H0 (m)
H205AX	L1-11	39.4	24	33	>4	500 >500*

塔身節 Mast	臂長 Jib length	H1 (m)	A1 (m)	P (t)	R (t)
H205AX	L1-11	54	16	275	60
		X (m)	Y (m)	L (m)	W (m)
		3.42	2.74	3.4	2.9

附著道數 Number of tie collars=(H0-A-C)/B+1

超過100m高度，需降低載荷，請與公司聯繫。

Load should be reduced when the height exceeds 100m. Please contact Yongmao for details.



STL1000 50t

主要性能參數 Specifications

機構 Mechanism	●		⌋		電動機 Motor kW
	m/min	t	m/min	t	
150LFV250B	0-30 0-120	25.0 5.0	0-15 0-60	50.0 10.0	750m >750m*
160DFV130B	15°-85°			2min	160
11 RFCV	0-0.6			rpm	2x11
RTV	0-15			m/min	4x7.5

供電容量 Power supply	kVA
380V (±10%) 50Hz	450

* 與製造商聯繫 Contact us, please.

☆ 标准配置 Standard configuration.

1 1
5 5
9 0

Luffing STL1000
Luffing STL1000



YONGMAO HOLDINGS LIMITED



YONGMAO HOLDINGS LIMITED