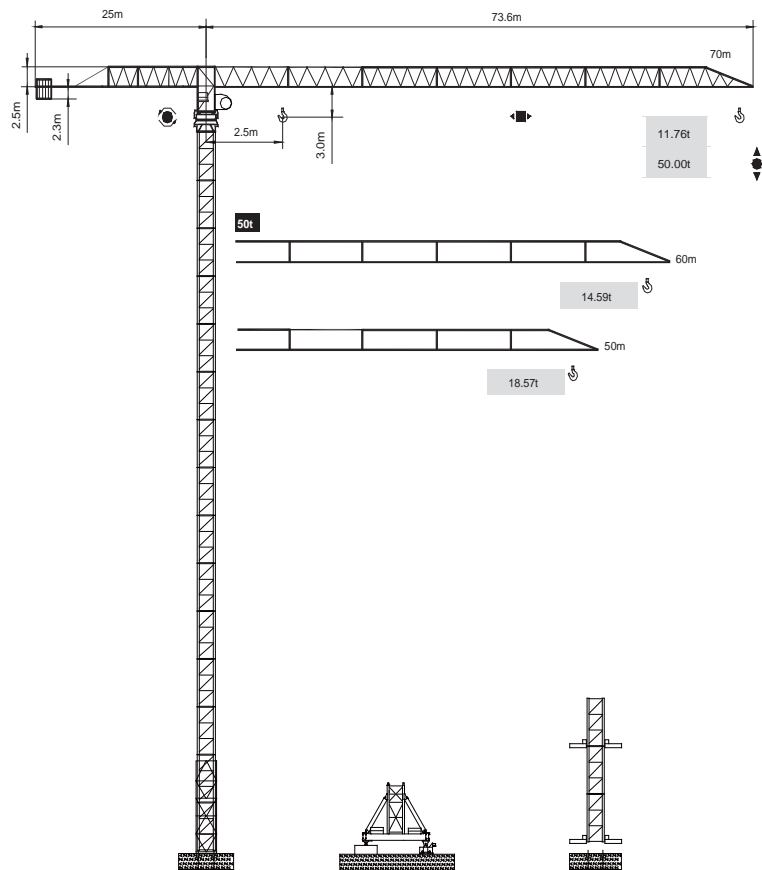


永茂建机  
YONGMAO

STT1100  
50t



CE FEM

Topless

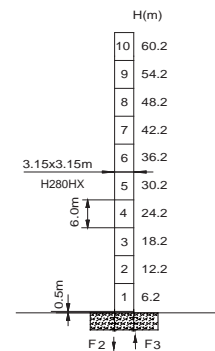
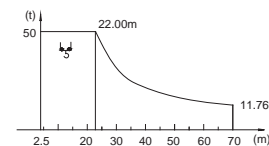
V 5.0-09112014

平頭系列

STT1100  
50t

載荷表 Load Chart

50t		ST7-50-A(B)-2-V1.0												
R (m)	倍率 Fall	R(C <sub>max</sub> ) (m)	C <sub>max</sub> (t)	20	25	30	35	40	45	50	55	60	65	70
70	↓	22.00	50.00	50.00	43.11	34.81	28.95	24.60	21.24	18.57	16.40	14.59	13.07	11.76
60	↓	22.00	50.00	50.00	43.11	34.81	28.95	24.60	21.24	18.57	16.40	14.59		
50	↓	22.00	50.00	50.00	43.11	34.81	28.95	24.60	21.24	18.57				



	●	■
F2	207t	147t
F3	352t	267t
⊗	235t	

● 工作狀態支反力 In service reaction    ■ 非工作狀態支反力 Out of service reaction  
⊗ 整機自由高度重量 (不含平衡重及壓重重量) Total weight of free standing crane (excludes counter weight & ballast.)

Topless STT1100

Topless STT1100  
Topless STT1100



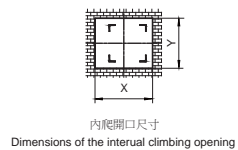
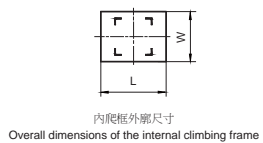
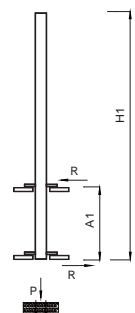
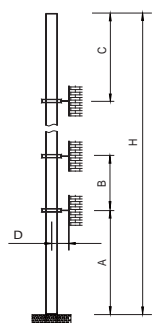
YONGMAO HOLDINGS LIMITED



YONGMAO HOLDINGS LIMITED

# STT1100

## 50t



塔身節 Mast	A (m)	B (m)	C (m)	D (m)	H (m)
H280HX	48	36	48	>5	350 >350

塔身節 Mast	H1 (m)	A1 (m)	P (t)	R (t)	X (m)	Y (m)	L (m)	W (m)
H280HX	60	14	295	78	*	*	*	*

附著道數 Number of tie collars  $= (H-A-C)/B+1$

超過100m高度，需降低載荷，請與公司聯繫。

Load should be reduced when the height exceeds 100m. Please contact Yongmao for details.

### 主要性能參數 Specifications

機構 Mechanism	速度 Speed		電機 Motor	電機 Motor kW
	m/min	t		
 150LFV250B	0 - 15	50.0	 750m > 750m*	2 x 110
	0 - 60	10.0		
 18DFV25	0 - 32 m/min			18.5
 11RFCV	0 - 0.6 rpm			4 x 11
 *	*			4 x 7.5

供電容量 Power supply	kVA
380V ( ± 10%) 50 Hz	150LFV250B : 360

\* 與製造商聯繫 Contact us, please.

☆ 标准配置 Standard configuration.

本技術參數不受法律約束，技術資訊請詳見相應說明書。

These specifications and data are not legally binding. For any technical information, please refer to corresponding instructions.

Topless STT1100

平頭系列

0 0  
1 1  
3 4

Topless STT1100

Topless STT1100



YONGMAO HOLDINGS LIMITED