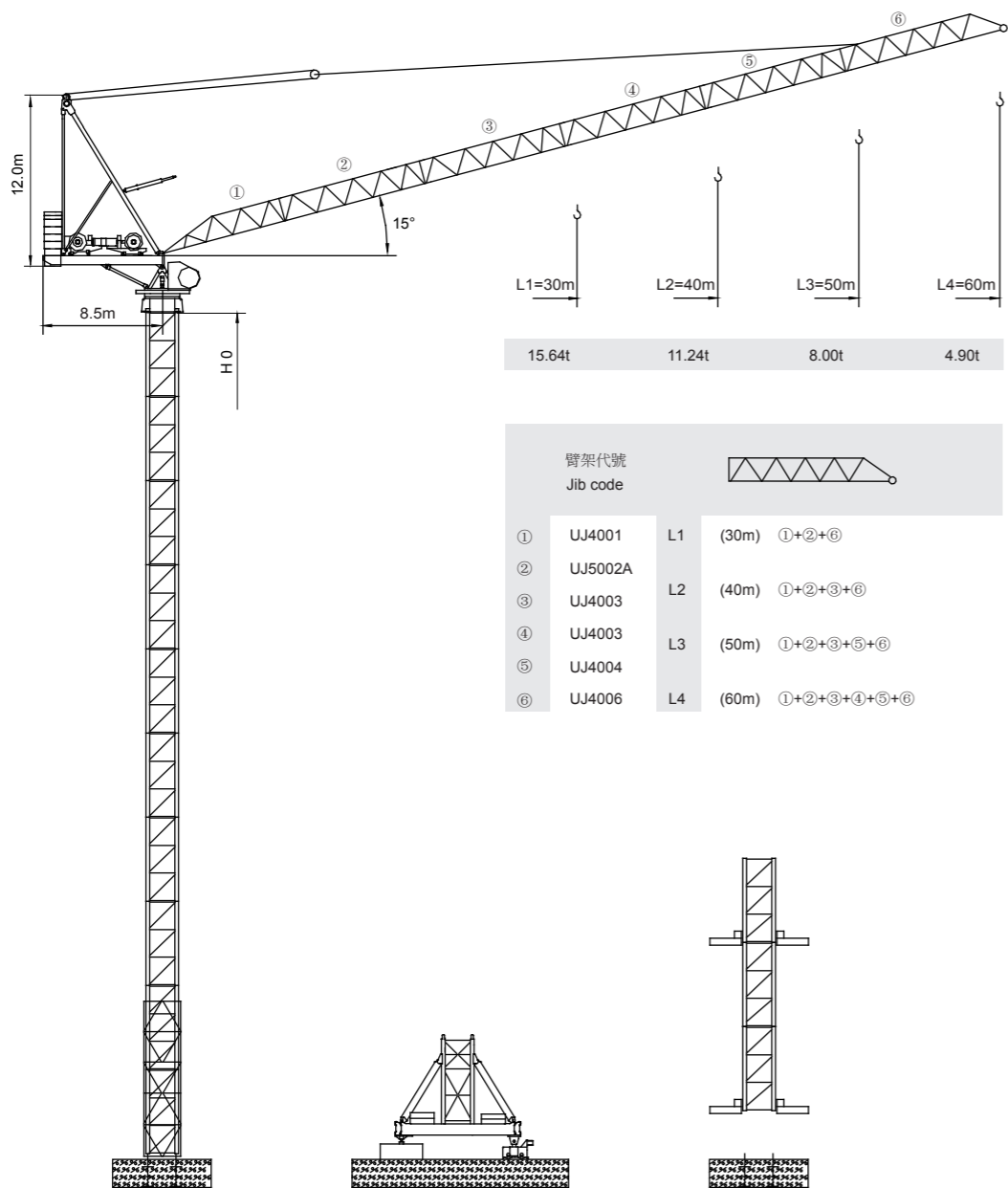


永茂建机 YONGMAO

STL420 24t



臂架代號 Jib code		圖示	
①	UJ4001	L1	(30m) ①+②+⑥
②	UJ5002A		
③	UJ4003	L2	(40m) ①+②+③+⑥
④	UJ4003	L3	(50m) ①+②+③+⑤+⑥
⑤	UJ4004		
⑥	UJ4006	L4	(60m) ①+②+③+④+⑤+⑥



CE FEM

Luffing

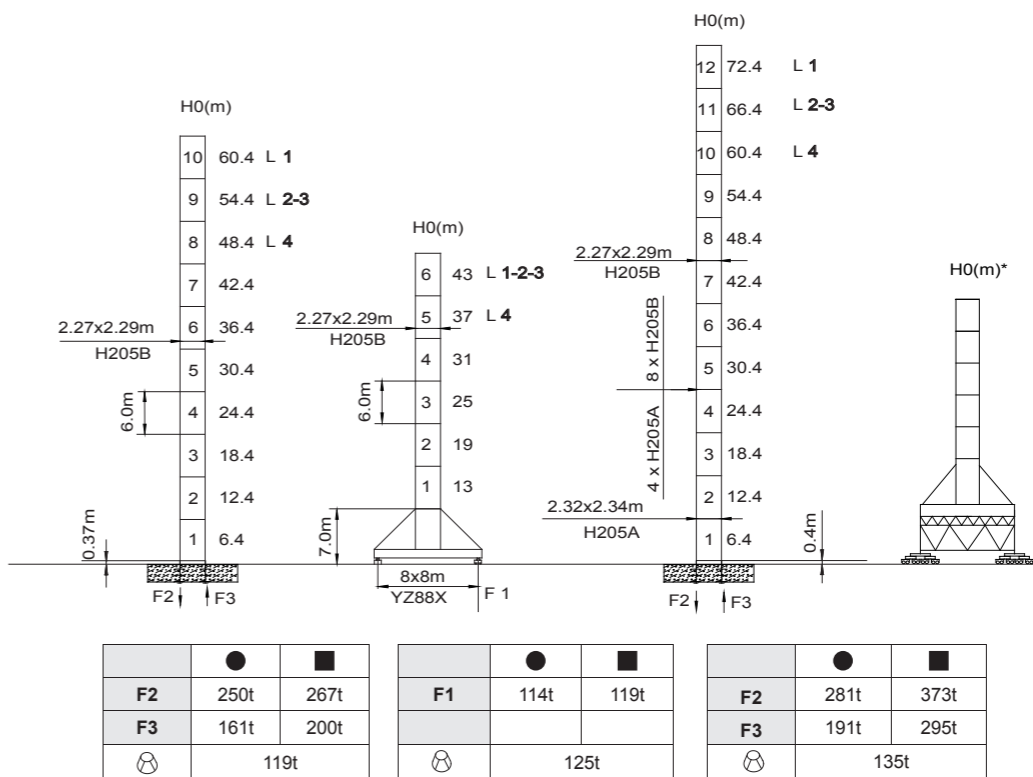
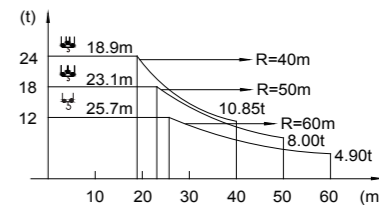
V 5.0-09112014

動臂系列

STL420 24t

載荷表 Load Chart

R (m)	倍率 Fall	R(C _{max}) (m)	C _{max} (t)	U-24-A(B)-1-V1.0														
				20	22	24	26	28	30	32	34	36	38	40	45	50	55	60
60	U	5.57~25.7	12.0	12.00	12.00	12.00	11.84	10.99	10.23	9.56	8.98	8.45	7.99	7.57	6.68	5.97	5.38	4.90
50	U	4.67~32.9	12.0	12.00	12.00	12.00	12.00	12.00	12.00	12.00	11.59	10.90	10.27	9.71	8.53	7.60		
	U	4.67~23.1	18.0	18.00	18.00	17.26	15.89	14.72	13.70	12.81	12.02	11.33	10.70	10.14	8.95	8.00		
40	U	3.78~36.3	12.0	12.00	12.00	12.00	12.00	12.00	12.00	12.00	12.00	12.00	11.43	10.85				
	U	3.78~25.3	18.0	18.00	18.00	17.53	16.24	15.12	14.14	13.28	12.51	11.82	11.24					
	U	3.78~18.9	24.0	22.66	20.52	18.74	17.23	15.94	14.73	13.75	12.89	12.12	11.43	10.85				
30	U	2.88~30.0	12.0	12.00	12.00	12.00	12.00	12.00	12.00	12.00	12.00	12.00	12.00	12.00	12.00	12.00	12.00	12.00
	U	2.88~26.1	18.0	18.00	18.00	18.00	18.00	18.00	18.00	18.00	16.75	15.64						
	U	2.88~19.4	24.0	23.29	21.09	19.25	17.70	16.36	15.25									



F2	●	250t	267t	F1	●	114t	119t	F2	●	281t	373t
	■	161t	200t		■				■	191t	295t
F3	⊗	119t		⊗	125t		⊗	135t			

● 工作狀態支反力 In service reaction ■ 非工作狀態支反力 Out of service reaction
⊗ 整機自由高度重量 (不含平衡重及壓重重量) Total weight of free standing crane (excludes counter weight & ballast.)

Luffing STL420

1 1
7 7
3 4

Luffing STL420
Luffing STL420



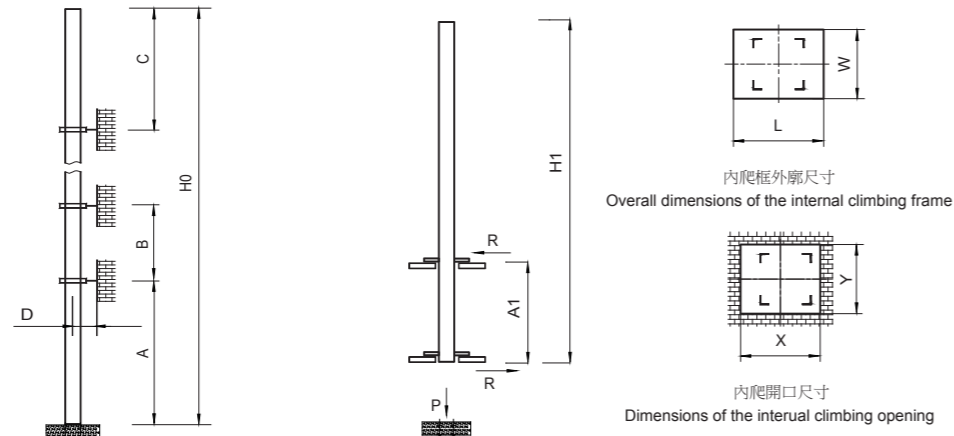
YONGMAO HOLDINGS LIMITED



YONGMAO HOLDINGS LIMITED

動臂系列

STL420 24t



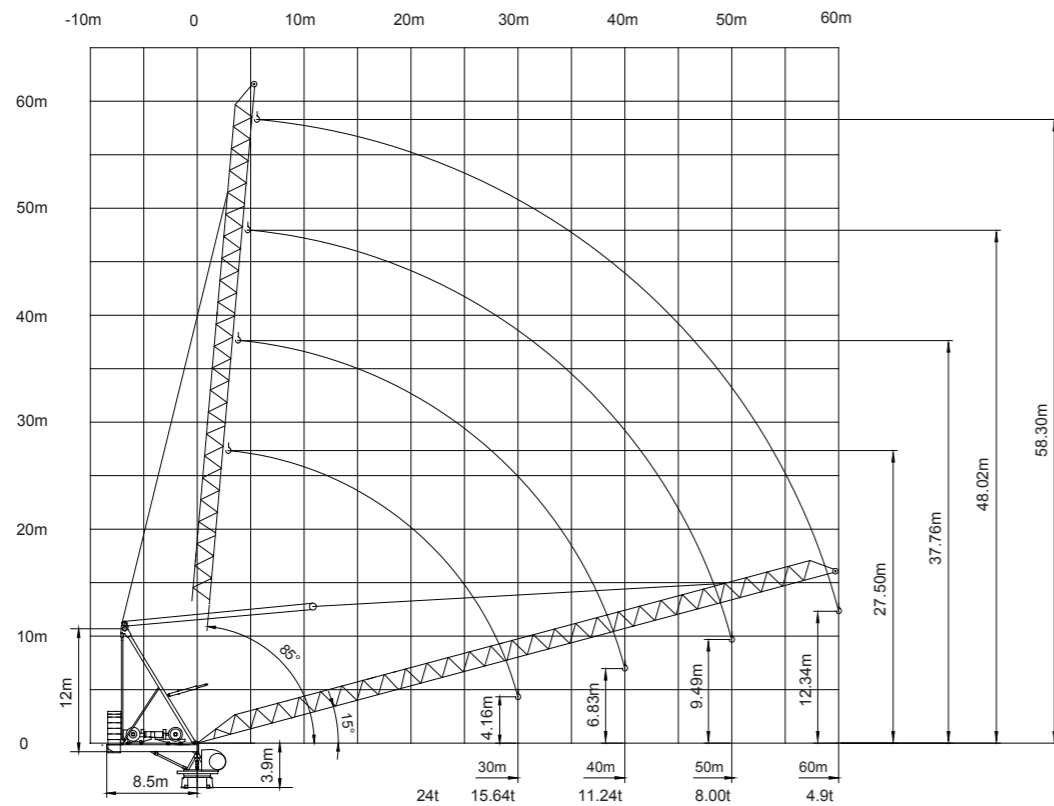
塔身節 Mast	臂長 Jib length	A (m)	B (m)	C (m)	D (m)	H0 (m)
H205B	L1	30/48	24/32	32	>4	390 >390*
	L2-3	30/42	24/30	30		
	L4	30/36	24/28	28		

塔身節 Mast	臂長 Jib length	H1 (m)	A1 (m)	P (t)	R (t)	X (m)	Y (m)	L (m)	W (m)
H205B	L1	60	18	160	34	3.28	2.40	3.50	3.02
	L2-3	48		158	32				
	L4	42		154	31				

附著道數 Number of tie collars=(H0-A-C)/B+1

超過100m高度，需降低載荷，請與公司聯繫。

Load should be reduced when the height exceeds 100m. Please contact Yongmao for details.



1 1
7 7
5 6

STL420 24t

主要性能參數 Specifications

機構 Mechanism	👤		👤		👤		🔌	電動機 Motor kW		
	m/min	t	m/min	t	m/min	t				
▲	90LFV60DB1 [☆]		0-40	12.0	0-26	18.0	0-20	24.0	1030m > 1030m*	90
			0-96	4.0	0-64	6.0	0-48	8.0		
			0-160	1.0	0-106	1.5	0-80	2.0		
●	90LFV60		0-38	12.0	0-25	18.0	0-19	24.0	550m	90
			0-46	10.0	0-30	15.0	0-23	20.0		
			0-72	4.0	0-48	6.0	0-36	8.0		
👤	90DFV60B	15° - 85°				3.0min				90
👤	RTC290	0-0.8				rpm				2x145 N·m
👤	RT	12.5 - 25				m/min				4x2.6/5.2

🔌 供電容量 Power supply	kVA
380V (± 10%) 50 Hz	90LFV60DB1 , 90LFV60 : 170

* 與製造商聯繫 Contact us, please.
[☆] 标准配置 Standard configuration.

本技術參數不受法律約束，技術資訊請詳見相應說明書。
 These specifications and data are not legally binding. For any technical information, please refer to corresponding instructions.



YONGMAO HOLDINGS LIMITED



YONGMAO HOLDINGS LIMITED

Luffing STL420
Luffing STL420