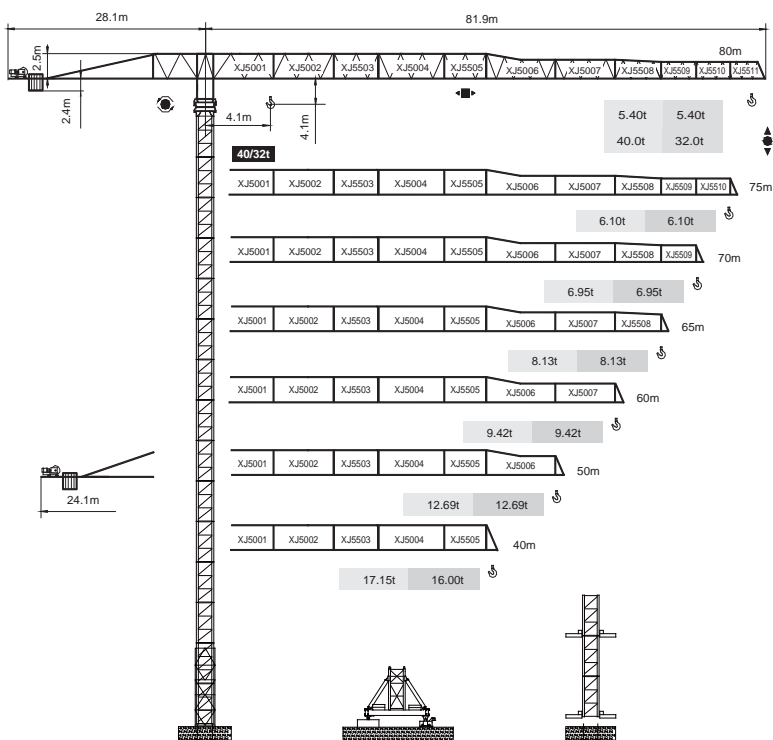


永茂建机
YONGMAO

STT753
40/32t



CE FEM

Topless

V 5.0-09112014

平頭系列

0 0
1 1
1 2

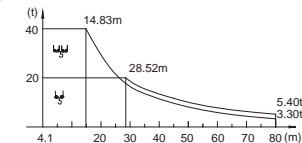
Topless STT753

Topless STT753

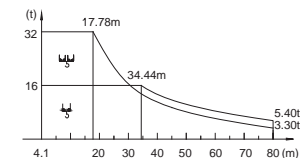
STT753
40/32t

載荷表 Load Chart

		X-40-A(B)-1-V1.0											
R (m)	倍率 Fall	R(C _{max}) (m)	C _{max} (t)	25	30	35	40	50	60	65	70	75	80
80	UU	14.83	40.00	20.87	16.46	13.36	11.47	8.14	5.97	5.14	4.44	3.83	3.30
	LD	28.52	20.00	20.00	18.84	15.70	13.37	10.15	8.02	7.21	6.52	5.92	5.40
75	UU	15.11	40.00	21.40	16.89	13.73	11.80	8.40	6.18	5.34	4.62	4.00	
	LD	29.10	20.00	20.00	19.30	16.09	13.71	10.42	8.25	7.42	6.71	6.10	
70	UU	15.46	40.00	22.06	17.44	14.19	12.21	8.73	6.45	5.59	4.85		
	LD	29.84	20.00	20.00	19.87	16.57	14.13	10.75	8.53	7.68	6.95		
65	UU	16.08	40.00	23.23	18.40	15.01	12.95	9.31	6.93	6.03			
	LD	31.13	20.00	20.00	20.00	17.43	14.88	11.35	9.02	8.13			
60	UU	16.58	40.00	24.16	19.17	15.67	13.54	9.77	7.32				
	LD	32.17	20.00	20.00	20.00	18.12	15.48	11.82	9.42				
50	UU	17.46	40.00	25.81	20.53	16.83	14.57	10.59					
	LD	34.06	20.00	20.00	20.00	19.38	16.57	12.69					
40	UU	17.50	40.00	26.57	21.16	17.36	15.05						
	LD	35.00	20.00	20.00	20.00	20.00	17.15						



		X-32-A(B)-1-V1.0											
R (m)	倍率 Fall	R(C _{max}) (m)	C _{max} (t)	25	30	35	40	50	60	65	70	75	80
80	UU	17.78	32.00	20.87	16.46	13.36	11.47	8.14	5.97	5.14	4.44	3.83	3.30
	LD	34.44	16.00	16.00	16.00	15.70	13.37	10.15	8.02	7.21	6.52	5.92	5.40
75	UU	18.12	32.00	21.40	16.89	13.73	11.80	8.40	6.18	5.34	4.62	4.00	
	LD	35.16	16.00	16.00	16.00	16.00	13.71	10.42	8.25	7.42	6.71	6.10	
70	UU	18.55	32.00	22.06	17.44	14.19	12.21	8.73	6.45	5.59	4.85		
	LD	36.06	16.00	16.00	16.00	16.00	14.13	10.75	8.53	7.68	6.95		
65	UU	19.31	32.00	23.23	18.40	15.01	12.95	9.31	6.93	6.03			
	LD	37.63	16.00	16.00	16.00	16.00	14.88	11.35	9.02	8.13			
60	UU	19.92	32.00	24.16	19.17	15.67	13.54	9.77	7.32				
	LD	38.90	16.00	16.00	16.00	16.00	15.48	11.82	9.42				
50	UU	20.99	32.00	25.81	20.53	16.83	14.57	10.59					
	LD	41.20	16.00	16.00	16.00	16.00	16.00	12.69					
40	UU	21.48	32.00	26.57	21.16	17.36	15.05						
	LD	40.00	16.00	16.00	16.00	16.00	16.00						



Topless STT753



YONGMAO HOLDINGS LIMITED



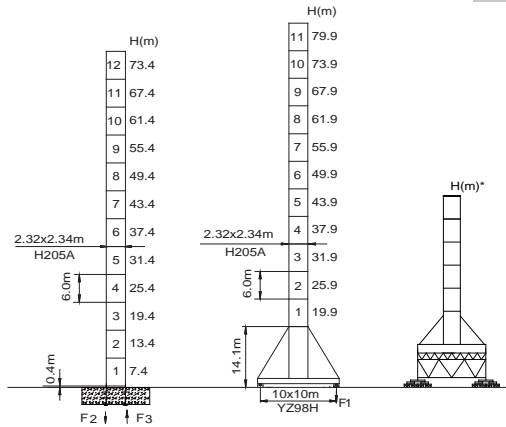
YONGMAO HOLDINGS LIMITED

STT753

40/32t

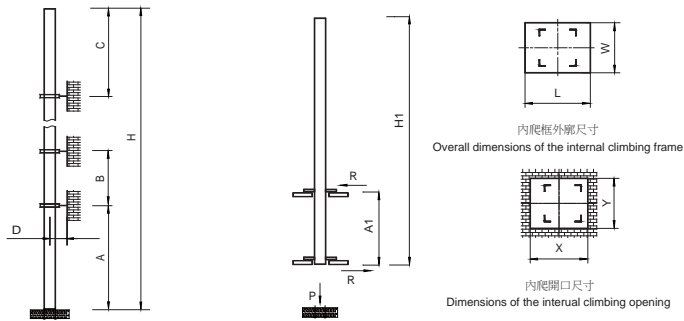
STT753

40/32t



	●	■
F2	35t	36t
F3	23t	25t
⊗	19t	

- 工作狀態支反力 In service reaction
- 非工作狀態支反力 Out of service reaction
- ⊗ 整機自由高度重量 (不含平衡重及壓重重量) Total weight of free standing crane (excludes counter weight & ballast)



塔身節 Mast	A (m)	B (m)	C (m)	D (m)	H (m)
H205A	57	42	48	>4.0	400 >400*

塔身節 Mast	H1 (m)	A1 (m)	P (t)	R (t)	X (m)	Y (m)	L (m)	W (m)
H205A	60	18	233	67.5	3.4	2.75	3.4	2.9

附著道數 Number of tie collars = (H-A-C)/B+1

超過100m高度，需降低載荷，請與公司聯繫。

Load should be reduced when the height exceeds 100m. Please contact Yongmao for details.

Topless STT753

主要性能參數 Specifications

機構 Mechanism	U		U		電動機 Motor kW
	m/min	t	m/min	t	
40t 110LFV100DB	0-20	20.0	0-10	40.0	900m > 900m*
	0-60	5.0	0-30	10.0	
	0-80	2.0	0-40	4.0	
32t 110LFV80DB	0-34	16.0	0-17	32.0	880m > 880m*
	0-40	13.0	0-20	26.0	
	0-136	3.0	0-68	6.0	
18DFV20	0-56 m/min				18.5
7.5RFCV	0-0.6 rpm				3x145 N·m
RTV	0-15 m/min				4x7.5

供電容量 Power supply	kVA
380V (±10%) 50 Hz	110LFV100DB, 110LFV80DB : 175

* 與製造商聯繫 Contact us, please.
☆ 標準配置 Standard configuration.

本技術參數不受法律約束，技術資訊請詳見相應說明書。
These specifications and data are not legally binding. For any technical information, please refer to corresponding instructions.

0 0
1 1
3 4

Topless STT753
Topless STT753



YONGMAO HOLDINGS LIMITED



YONGMAO HOLDINGS LIMITED